

Datasheet for ABIN376374

Rat anti-Mouse IgE (Heavy Chain) Antibody



[Go to Product page](#)

1 Image

Overview

Quantity:	0.5 mg
Target:	IgE
Binding Specificity:	Heavy Chain
Reactivity:	Mouse
Host:	Rat
Clonality:	Monoclonal
Application:	ELISA

Product Details

Immunogen:	Monoclonal anti-DNP mouse IgE
Clone:	23G3
Isotype:	IgG1
Specificity:	Reacts with the epsilon heavy chain of BALB/c mouse IgE as demonstrated by ELISA.
Characteristics:	Rat Anti-Mouse IgE-LE/AF
Purification:	Purified
Endotoxin Level:	Low endotoxin

Target Details

Target:	IgE
Abstract:	IgE Products

Application Details

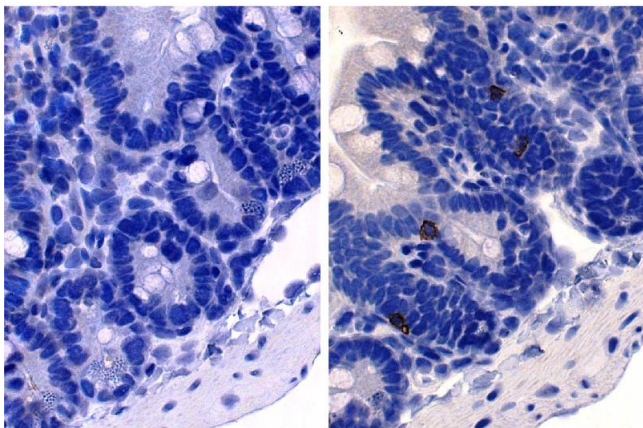
Application Notes:	<ul style="list-style-type: none">• Applications: ELISA - Quality tested , FLISA - Quality tested FC - Reported in literature , IHC-FS - Reported in literature , IHC-PS , IHC-WM - Reported in literature , WB - Reported in literature , ELISPOT - Reported in literature , Neut - Reported in literature• Working Dilutions: ELISA AP conjugate 1:500 - 1:1,000 HRP conjugate 1:1,000 - 1:2,000 BIOT conjugate 1:5,000 - 1:10,000 FLISA FITC conjugate 1:200 - 1:400 PE conjugate 1 g/mL
--------------------	--

Restrictions:	For Research Use only
---------------	-----------------------

Handling

Concentration:	0.5 mg/mL
Buffer:	0.5 mg purified immunoglobulin in 1.0 mL of PBS
Preservative:	Azide free
Handling Advice:	Each reagent is stable for the period shown on the bottle label if stored as directed.
Storage:	4 °C,-20 °C
Storage Comment:	Aliquot and freeze the low endotoxin, azide-free product at -20 °C immediately upon receipt.

Images



Immunohistochemistry

Image 1. Paraffin embedded mouse small intestine section was stained with Rat Anti-Mouse IgE-UNLB followed by an HRP conjugated secondary antibody, DAB, and hematoxylin.