



[Go to Product page](#)

Datasheet for ABIN376411

## anti-MHC Class II I-Ab antibody (PE)

### 1 Image

#### Overview

Quantity:	0.1 mg
Target:	MHC Class II I-Ab
Reactivity:	Mouse
Host:	Mouse
Clonality:	Monoclonal
Conjugate:	This MHC Class II I-Ab antibody is conjugated to PE
Application:	Flow Cytometry (FACS)

#### Product Details

Immunogen:	C3H.SW mouse splenocytes
Clone:	25-9-3
Isotype:	IgM
Specificity:	Mouse I-Ab
Characteristics:	Mouse Anti-Mouse I-Ab-PE
Purification:	Purified

#### Target Details

Target:	MHC Class II I-Ab
Abstract:	<a href="#">MHC Class II I-Ab Products</a>

## Application Details

Application Notes:	<ul style="list-style-type: none"><li>• <b>Applications:</b> FC - Quality tested IHC-FS - Reported in literature , CMCD - Reported in literature</li><li>• <b>Working Dilutions:</b> Flow Cytometry FLMA and BIOT conjugates 1 g/106 cells PE conjugate 0.2 g/106 cells For flow cytometry, the suggested use of these reagents is in a final volume of 100 L</li></ul>
--------------------	---

Comment: Complement-dependent cytotoxicity assays

Sample Volume: 1 mL

Restrictions: For Research Use only

## Handling

Concentration: 0.1 mg/mL

Buffer: 0.1 mg in 1.0 mL of PBS/Sodium azide and a stabilizing agent

Preservative: Sodium azide

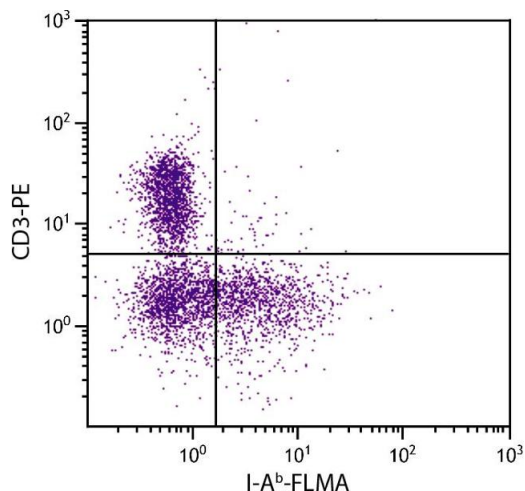
Precaution of Use: This product contains Sodium azide: a POISONOUS AND HAZARDOUS SUBSTANCE which should be handled by trained staff only.

Handling Advice: **Do not freeze!**  
**Protect conjugated products from light.**  
Each reagent is stable for the period shown on the bottle label if stored as directed.

Storage: 4 °C

Storage Comment: Store at 2-8°C

## Images



### Flow Cytometry

**Image 1.** C57BL/6 mouse splenocytes were stained with Mouse Anti-Mouse I-Ab-FLMA and Rat Anti-Mouse CD3ε-PE.