



[Go to Product page](#)

Datasheet for ABIN376451

## Goat anti-Mouse IgG1 Antibody (PE) - Preadsorbed

1 Image

2 Publications

### Overview

Quantity:	0.25 mg
Target:	IgG1
Reactivity:	Mouse
Host:	Goat
Clonality:	Polyclonal
Conjugate:	PE
Application:	ELISA, Flow Cytometry (FACS)

### Product Details

Isotype:	IgG
Fragment:	F(ab') <sub>2</sub> fragment
Specificity:	Reacts with the heavy chain of mouse IgG1
Characteristics:	Goat F(ab') <sub>2</sub> Anti-Mouse IgG1, Human ads-PE
Purification:	Preadsorption: Human adsorbed

### Target Details

Target:	IgG1
Abstract:	<a href="#">IgG1 Products</a>
Target Type:	Antibody

## Application Details

---

Application Notes:

- **Applications:** Quality tested applications include - ELISA FLISA FC ,
- Other referenced applications include - IHC-FS , IHC-PS , ICC
- **Working Dilutions:** ELISA BIOT conjugate 1:5,000 - 1:10,000 FLISA FITC, AF488, and AF555 conjugates 1:100 - 1:400 PE and AF647 conjugates 1 g/mL Flow Cytometry FITC, BIOT, and AF488 conjugates 1 g/106 cells PE conjugate 0.2 g/106 cells AF647 conjugate 0.1 g/106 cells For flow cytometry, the suggested use of these reagents is in a final volume of 100 L

Restrictions: For Research Use only

## Handling

---

Format: Liquid

Buffer: 0.25 mg in 1.0 mL of PBS/Sodium azide and a stabilizing agent

Preservative: Sodium azide

Precaution of Use: This product contains Sodium azide: a POISONOUS AND HAZARDOUS SUBSTANCE which should be handled by trained staff only.

Handling Advice: **Do not freeze!**  
**Protect conjugated products from light.**  
Each reagent is stable for the period shown on the bottle label if stored as directed.

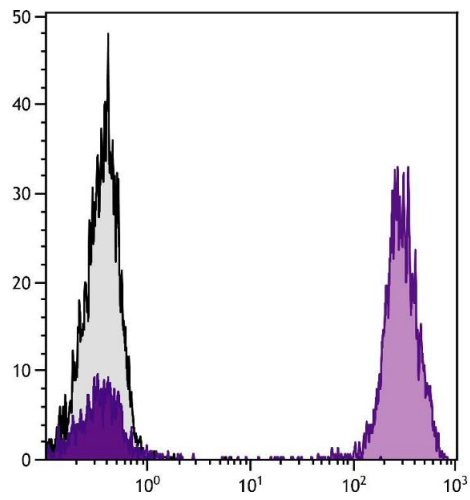
Storage: 4 °C

Storage Comment: Store at 2-8°C

## Publications

---

Product cited in: Bishop, Valle Oseguera, Spencer: "Human Cytomegalovirus interleukin-10 promotes proliferation and migration of MCF-7 breast cancer cells." in: **Cancer cell & microenvironment**, Vol. 2, Issue 1 ([PubMed](#)).



### Flow Cytometry

**Image 1.** Human peripheral blood lymphocytes were stained with Mouse Anti-Human CD3-UNLB followed by Goat F(ab')<sub>2</sub> Anti-Mouse IgG1, Human ads-PE.