



[Go to Product page](#)

Datasheet for ABIN376452

Goat anti-Mouse IgG2a Antibody (PE) - Preadsorbed

1 Image

1 Publication

Overview

Quantity:	0.5 mg
Target:	IgG2a
Reactivity:	Mouse
Host:	Goat
Clonality:	Polyclonal
Conjugate:	PE
Application:	ELISA, Flow Cytometry (FACS)

Product Details

Isotype:	IgG
Specificity:	Reacts with the heavy chain of mouse IgG2a
Characteristics:	Goat Anti-Mouse IgG2a, Human ads-PE
Purification:	Purification Method: Affinity chromatography on mouse IgG2a covalently linked to agarose. Preadsorption: Human Adsorbed

Target Details

Target:	IgG2a
Abstract:	IgG2a Products
Target Type:	Antibody

Application Details

Application Notes:

- **Applications:** Quality tested applications include - ELISA , FLISA FC ,
- Other referenced applications include - ELISPOT , IHC-FS , IHC-PS , ICC , EM , WB , SPR , Purification
- **Working Dilutions:** ELISA AP conjugate 1:2,000 - 1:4,000 HRP conjugate 1:4,000 - 1:8,000 BIOT conjugate 1:5,000 - 1:20,000 FLISA FITC, TRITC, TXRD, AF488, and AF555 conjugates 1:100 - 1:400 PE, APC, CY5, and AF647 conjugates 1 g/mL Flow Cytometry FITC, BIOT, and AF488 conjugates 1 g/106 cells PE, PE/TXRD, APC, CY5, PE/CY7, APC/CY7, and AF647 0.1 g/106 cells conjugates For flow cytometry, the suggested use of these reagents is in a final volume of 100 L

Restrictions: For Research Use only

Handling

Buffer: 0.25 mg in 1.0 mL of PBS/Sodium azide and a stabilizing agent

Preservative: Sodium azide

Precaution of Use: This product contains Sodium azide: a POISONOUS AND HAZARDOUS SUBSTANCE which should be handled by trained staff only.

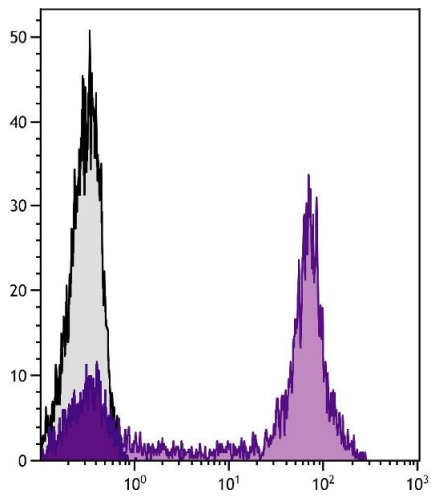
Handling Advice: **Do not freeze!**
Protect conjugated products from light.
Each reagent is stable for the period shown on the bottle label if stored as directed.

Storage: 4 °C

Storage Comment: Store at 2-8°C

Publications

Product cited in: Fliedl, Manhart, Kast, Katinger, Kunert, Grillari, Wieser, Grillari-Voglauer: "Novel human renal proximal tubular cell line for the production of complex proteins." in: **Journal of biotechnology**, Vol. 176, pp. 29-39, (2014) ([PubMed](#)).



Flow Cytometry

Image 1. Human peripheral blood lymphocytes were stained with Mouse Anti-Human CD5-UNLB followed by Goat Anti-Mouse IgG2a, Human ads-PE.