

Datasheet for ABIN376454

Goat anti-Mouse IgG2a Antibody (PE) - Preadsorbed[Go to Product page](#)**1** Image

Overview

Quantity:	0.25 mg
Target:	IgG2a
Reactivity:	Mouse
Host:	Goat
Clonality:	Polyclonal
Conjugate:	PE
Application:	ELISA, Flow Cytometry (FACS)

Product Details

Isotype:	IgG
Fragment:	F(ab') ₂ fragment
Specificity:	Reacts with the heavy chain of mouse IgG2a
Characteristics:	Goat F(ab') ₂ Anti-Mouse IgG2a, Human ads-PE
Purification:	Preadsorption: Human adsorbed

Target Details

Target:	IgG2a
Abstract:	IgG2a Products
Target Type:	Antibody

Application Details

Application Notes:

- **Applications:** Quality tested applications include - ELISA , FLISA FC ,
- Other referenced applications include - IHC-FS , IHC-PS , ICC
- **Working Dilutions:** ELISA BIOT conjugate 1:5,000 - 1:10,000 FLISA FITC, AF488, and AF555 conjugates 1:100 - 1:400 PE and AF647 conjugates 1 g/mL Flow Cytometry FITC, BIOT, and AF488 conjugates 1 g/10⁶ cells PE and AF647 conjugates 0.2 g/10⁶ cells For flow cytometry, the suggested use of these reagents is in a final volume of 100 L

Restrictions:

For Research Use only

Handling

Buffer:

0.25 mg in 1.0 mL of PBS/Sodium azide and a stabilizing agent

Preservative:

Sodium azide

Precaution of Use:

This product contains Sodium azide: a POISONOUS AND HAZARDOUS SUBSTANCE which should be handled by trained staff only.

Handling Advice:

Do not freeze!

Protect conjugated products from light.

Each reagent is stable for the period shown on the bottle label if stored as directed.

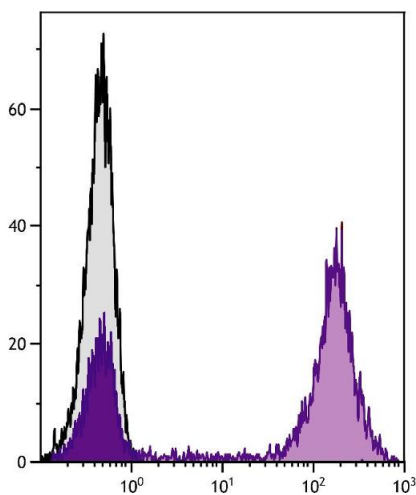
Storage:

4 °C

Storage Comment:

Store at 2-8°C

Images



Flow Cytometry

Image 1. Human peripheral blood lymphocytes were stained with Mouse Anti-Human CD5-UNLB followed by Goat F(ab')₂ Anti-Mouse IgG2a, Human ads-PE.