



[Go to Product page](#)

Datasheet for ABIN376455

Goat anti-Mouse IgG2b Antibody (PE) - Preadsorbed

1 Image

4 Publications

Overview

Quantity:	0.5 mg
Target:	IgG2b
Reactivity:	Mouse
Host:	Goat
Clonality:	Polyclonal
Conjugate:	PE
Application:	ELISA, Flow Cytometry (FACS)

Product Details

Isotype:	IgG
Specificity:	Reacts with the heavy chain of mouse IgG2b
Characteristics:	Goat Anti-Mouse IgG2b, Human ads-PE
Purification:	Purification Method: Affinity chromatography on mouse IgG2b covalently linked to agarose. Preadsorption: Human Adsorbed

Target Details

Target:	IgG2b
Abstract:	IgG2b Products
Target Type:	Antibody

Application Details

Application Notes:

- **Applications:** Quality tested applications include - ELISA , FLISA FC ,
- Other referenced applications include - ELISPOT , IHC-FS , IHC-PS , ICC , WB
- **Working Dilutions:** ELISA AP conjugate 1:2,000 - 1:4,000 HRP conjugate 1:4,000 - 1:8,000 BIOT conjugate 1:5,000 - 1:20,000 FLISA FITC, TRITC, TXRD, AF488, and AF555 conjugates 1:100 - 1:400 PE, APC, CY5, and AF647 conjugates 1 g/mL Flow Cytometry FITC, BIOT, and AF488 conjugates 1 g/10⁶ cells PE, APC, SPRD, CY5, PE/CY7, APC/CY7, and AF647 conjugates 0.1 g/10⁶ cells For flow cytometry, the suggested use of these reagents is in a final volume of 100 L

Restrictions: For Research Use only

Handling

Buffer: 0.25 mg in 1.0 mL of PBS/Sodium azide and a stabilizing agent

Preservative: Sodium azide

Precaution of Use: This product contains Sodium azide: a POISONOUS AND HAZARDOUS SUBSTANCE which should be handled by trained staff only.

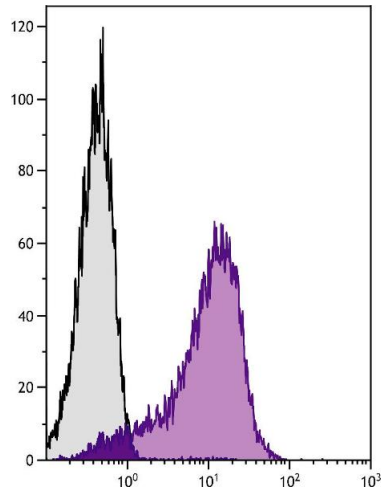
Handling Advice: **Do not freeze!**
Protect conjugated products from light.
Each reagent is stable for the period shown on the bottle label if stored as directed.

Storage: 4 °C

Storage Comment: Store at 2-8°C

Publications

Product cited in: Bishop, Valle Oseguera, Spencer: "Human Cytomegalovirus interleukin-10 promotes proliferation and migration of MCF-7 breast cancer cells." in: **Cancer cell & microenvironment**, Vol. 2, Issue 1 ([PubMed](#)).



Flow Cytometry

Image 1. Chicken thymocytes were stained with Mouse Anti-Chicken MCAM-UNLB.