

Datasheet for ABIN376465

## Rat anti-Mouse IgG1 Antibody (PE)



[Go to Product page](#)

### 1 Image

#### Overview

Quantity:	0.1 mg
Target:	IgG1
Reactivity:	Mouse
Host:	Rat
Clonality:	Monoclonal
Conjugate:	PE
Application:	ELISA, Flow Cytometry (FACS)

#### Product Details

Immunogen:	Unknown
Clone:	SB77e
Isotype:	IgG2b
Specificity:	Mouse IgG1 Fc Minimal reactivity to human, goat, and rabbit IgG
Characteristics:	Rat Anti-Mouse IgG1-PE
Purification:	Purified

#### Target Details

Target:	IgG1
Abstract:	<a href="#">IgG1 Products</a>
Target Type:	Antibody

# Application Details

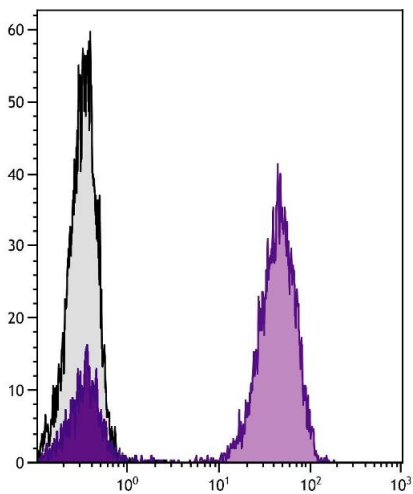
Application Notes:	<ul style="list-style-type: none"><li>• <b>Applications:</b> FC - Quality tested , ELISA - Quality tested , FLISA - Quality tested IHC-FS - Reported in literature , WB - Reported in literature</li><li>• <b>Working Dilutions:</b> Flow Cytometry FITC, BIOT, and AF488 conjugates 1.0 g/106 cells PE and AF647 conjugates 0.1 g/106 cells For flow cytometry, the suggested use of these reagents is in a final volume of 100 L ELISA AP conjugate 1:1,000 - 1:4,000 HRP conjugate 1:4,000 - 1:8,000 BIOT conjugate 1:5,000 - 1:20,000 FLISA FITC, AF488, and AF555 conjugates 1:100 - 1:400 PE and AF647 conjugates 1 g/mL</li></ul>
--------------------	--

Restrictions:	For Research Use only
---------------	-----------------------

## Handling

Concentration:	0.1 mg/mL
Buffer:	0.1 mg in 1.0 mL of PBS/Sodium azide and a stabilizing agent
Preservative:	Sodium azide
Precaution of Use:	This product contains Sodium azide: a POISONOUS AND HAZARDOUS SUBSTANCE which should be handled by trained staff only.
Handling Advice:	<p><b>Do not freeze!</b></p> <p><b>Protect conjugated products from light.</b></p> <p>Each reagent is stable for the period shown on the bottle label if stored as directed.</p>
Storage:	4 °C
Storage Comment:	Store at 2-8°C

## Images



### Flow Cytometry

**Image 1.** Human peripheral blood lymphocytes were stained with Mouse Anti-Human CD3-UNLB followed by Rat Anti-Mouse IgG1.