



[Go to Product page](#)

Datasheet for ABIN376507

Goat anti-Human IgM Antibody (PE)

1 Image

Overview

Quantity:	0.25 mg
Target:	IgM
Reactivity:	Human
Host:	Goat
Clonality:	Polyclonal
Conjugate:	PE
Application:	ELISA, Flow Cytometry (FACS)

Product Details

Isotype:	IgG
Fragment:	F(ab') ₂ fragment
Specificity:	Reacts with the heavy chain of human IgM
Characteristics:	Goat F(ab') ₂ Anti-Human IgM-PE
Purification:	Purified

Target Details

Target:	IgM
Abstract:	IgM Products
Target Type:	Antibody

Application Details

Application Notes:	<ul style="list-style-type: none">• Applications: Quality tested applications include - ELISA , FLISA FC ,• Other referenced applications include - ICC , ELISPOT , Stim• Working Dilutions: ELISA HRP conjugate 1:4,000 - 1:8,000 BIOT conjugate 1:5,000 - 1:20,000 FLISA FITC, AF488, and AF555 conjugates 1:100 - 1:400 PE and AF647 conjugates 1 g/mL Flow Cytometry FITC, BIOT, and AF488 conjugates 1 g/10⁶ cells PE and AF647 conjugates 0.1 g/10⁶ cells For flow cytometry, the suggested use of these reagents is in a final volume of 100 L
--------------------	---

Restrictions:	For Research Use only
---------------	-----------------------

Handling

Buffer:	0.25 mg in 1.0 mL of PBS/Sodium azide and a stabilizing agent
Preservative:	Sodium azide
Precaution of Use:	This product contains Sodium azide: a POISONOUS AND HAZARDOUS SUBSTANCE which should be handled by trained staff only.

Handling Advice:	Do not freeze! Protect conjugated products from light. Each reagent is stable for the period shown on the bottle label if stored as directed.
------------------	---

Storage:	4 °C
----------	------

Storage Comment:	Store at 2-8°C
------------------	----------------

Images

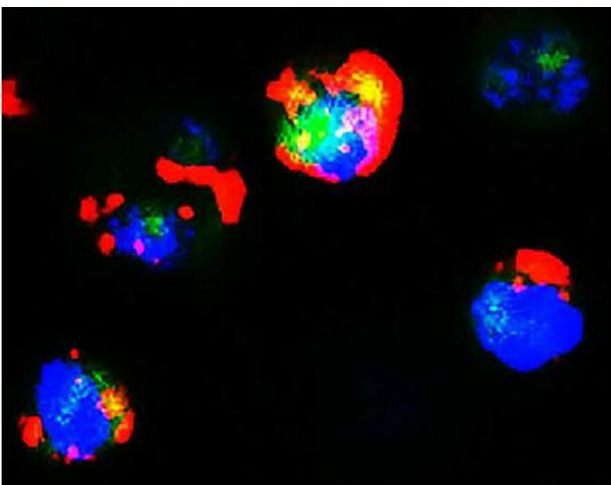


Image 1. GFP+ hFCMR-transfected cells were stained with Goat F(ab')₂ Anti-Human IgM-PE