



[Go to Product page](#)

Datasheet for ABIN376508

Goat anti-Human IgD Antibody (PE)

1 Image

5 Publications

Overview

Quantity:	0.5 mg
Target:	IgD
Reactivity:	Human
Host:	Goat
Clonality:	Polyclonal
Conjugate:	PE
Application:	Flow Cytometry (FACS), ELISA

Product Details

Isotype:	IgG
Specificity:	Reacts with the heavy chain of human IgD
Characteristics:	Goat Anti-Human IgD-PE
Purification:	Purification Method: Affinity chromatography on human IgD covalently linked to agarose.

Target Details

Target:	IgD
Abstract:	IgD Products
Target Type:	Antibody

Application Details

Application Notes:	<ul style="list-style-type: none">• Applications: Quality tested applications include - ELISA FLISA FC ,• Other referenced applications include - IHC-FS , IHC-PS , Sep• Working Dilutions: ELISA AP conjugate 1:2,000 - 1:4,000 HRP conjugate 1:4,000 - 1:8,000 BIOT conjugate 1:5,000 - 1:20,000 FLISA FITC, TRITC, TXRD, AF488, and AF555 conjugates 1:100 - 1:400 PE and AF647 conjugates 1 g/mL Flow Cytometry FITC, BIOT, and AF488 conjugates 1 g/10⁶ cells PE and AF647 conjugates 0.1 g/10⁶ cells For flow cytometry, the suggested use of these reagents is in a final volume of 100 L
--------------------	--

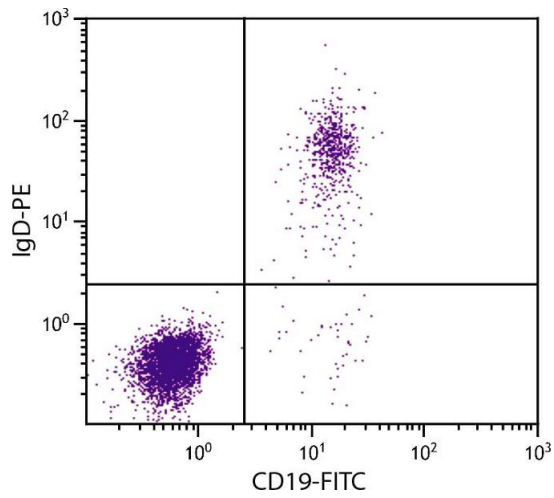
Restrictions:	For Research Use only
---------------	-----------------------

Handling

Concentration:	0.5 mg/mL
Buffer:	0.5 mg in 1.0 mL of PBS/Sodium azide and a stabilizing agent
Preservative:	Sodium azide
Precaution of Use:	This product contains Sodium azide: a POISONOUS AND HAZARDOUS SUBSTANCE which should be handled by trained staff only.
Handling Advice:	Do not freeze! Protect conjugated products from light. Each reagent is stable for the period shown on the bottle label if stored as directed.
Storage:	4 °C
Storage Comment:	Store at 2-8°C

Publications

Product cited in:	van Dop, Heijmans, Büller, Snoek, Rosekrans, Wassenberg, van den Bergh Weerman, Lanske, Clarke, Winton, Wijgerde, Offerhaus, Hommes, Hardwick, de Jonge, Biemond, van den Brink: " Loss of Indian Hedgehog activates multiple aspects of a wound healing response in the mouse intestine." in: Gastroenterology , Vol. 139, Issue 5, pp. 1665-76, 1676.e1-10, (2010) (PubMed).
-------------------	---



Flow Cytometry

Image 1. Human peripheral blood lymphocytes were stained with Goat Anti-Human IgD-PE and Mouse Anti-Human CD19-FITC.