

Datasheet for ABIN376521

Goat anti-Rat Ig Antibody (PE) - Preadsorbed



[Go to Product page](#)

1 Image

Overview

Quantity:	0.5 mg
Target:	Ig
Reactivity:	Rat
Host:	Goat
Clonality:	Polyclonal
Conjugate:	PE
Application:	ELISA, Flow Cytometry (FACS)

Product Details

Isotype:	IgG
Specificity:	Reacts with the heavy and light chains of rat IgG and IgM
Characteristics:	Goat Anti-Rat Ig, Mouse ads-PE
Purification:	Purification Method: Affinity chromatography on pooled rat Ig covalently linked to agarose. Preadsorption: Mouse adsorbed

Target Details

Target:	Ig
Abstract:	Ig Products

Application Details

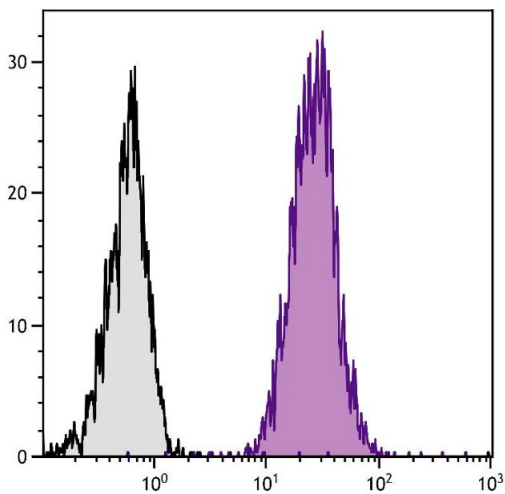
Application Notes:	<ul style="list-style-type: none">• Applications: Quality tested applications include - ELISA , FLISA FC ,• Other referenced applications include - IHC-FS , IHC-PS , ICC , WB , Depletion• Working Dilutions: ELISA AP conjugate 1:2,000 - 1:4,000 HRP conjugate 1:4,000 - 1:8,000 BIOT conjugate 1:5,000 - 1:20,000 FLISA FITC, TRITC, and TXRD conjugates 1:100 - 1:400 PE and APC conjugates 1 g/mL Flow Cytometry FITC and BIOT conjugates 1 g/10⁶ cells PE and APC conjugates 0.1 g/10⁶ cells For flow cytometry, the suggested use of these reagents is in a final volume of 100 L
--------------------	---

Restrictions:	For Research Use only
---------------	-----------------------

Handling

Concentration:	0.5 mg/mL
Buffer:	0.5 mg in 1.0 mL or 0.25 mg in 0.5 mL of PBS/Sodium azide and a stabilizing agent
Preservative:	Sodium azide
Precaution of Use:	This product contains Sodium azide: a POISONOUS AND HAZARDOUS SUBSTANCE which should be handled by trained staff only.
Handling Advice:	<p>Do not freeze!</p> <p>Protect conjugated products from light.</p> <p>Each reagent is stable for the period shown on the bottle label if stored as directed.</p>
Storage:	4 °C
Storage Comment:	Store at 2-8°C

Images



Flow Cytometry

Image 1. BALB/c mouse splenocytes were stained with Rat Anti-Mouse CD45-UNLB.