

Datasheet for ABIN376529

Mouse anti-Rat IgG2a Antibody (PE)[Go to Product page](#)**1** Image

Overview

Quantity:	0.1 mg
Target:	IgG2a
Reactivity:	Rat
Host:	Mouse
Clonality:	Monoclonal
Conjugate:	PE
Application:	ELISA, Flow Cytometry (FACS)

Product Details

Immunogen:	Rat IgG2a hybridoma
Clone:	2A8F4
Isotype:	IgG1
Specificity:	Rat IgG2a
Characteristics:	Mouse Anti-Rat IgG2a-PE
Purification:	Purified

Target Details

Target:	IgG2a
Abstract:	IgG2a Products
Target Type:	Antibody

Application Details

- Application Notes:
- **Applications:** FC - Quality tested , ELISA - Quality tested , FLISA - Quality tested IHC-FS - Reported in literature , ELISPOT - Reported in literature
 - **Working Dilutions:** Flow Cytometry FITC, BIOT, and AF488 conjugates 1 g/10⁶ cells PE, CY5, and AF647 conjugates 0.1 g/10⁶ cells For flow cytometry, the suggested use of these reagents is in a final volume of 100 L ELISA AP conjugate 1:2,000 - 1:4,000 HRP conjugate 1:4,000 - 1:8,000 BIOT conjugate 1:5,000 - 1:10,000 FLISA FITC and AF488 conjugates 1:200 - 1:400 AF555 conjugate 1:100 - 1:400 PE, CY5, and AF647 conjugates 1 g/mL

Restrictions: For Research Use only

Handling

Concentration: 0.1 mg/mL

Buffer: 0.1 mg in 1.0 mL of PBS/Sodium azide and a stabilizing agent

Preservative: Sodium azide

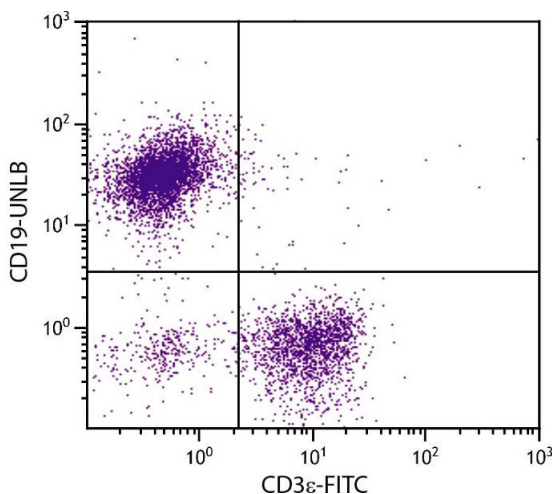
Precaution of Use: This product contains Sodium azide: a POISONOUS AND HAZARDOUS SUBSTANCE which should be handled by trained staff only.

Handling Advice: **Do not freeze!**
Protect conjugated products from light.
Each reagent is stable for the period shown on the bottle label if stored as directed.

Storage: 4 °C

Storage Comment: Store at 2-8°C

Images



Flow Cytometry

Image 1. BALB/c mouse splenocytes were stained with Rat Anti-Mouse CD19-UNLB.