



Datasheet for ABIN376543

Goat anti-Hamster IgG (Heavy & Light Chain) Antibody (PE) - Preadsorbed



[Go to Product page](#)

1 Image

Overview

Quantity:	0.5 mg
Target:	IgG
Binding Specificity:	Heavy & Light Chain
Reactivity:	Hamster
Host:	Goat
Clonality:	Polyclonal
Conjugate:	PE
Application:	ELISA, Flow Cytometry (FACS)

Product Details

Isotype:	IgG
Specificity:	Reacts with the heavy and light chains of hamster IgG, may only react with Syrian hamster IgG
Characteristics:	Goat Anti-Hamster IgG(H+L), Mouse/Rat ads-PE
Purification:	Purification Method: Affinity chromatography on hamster IgG covalently linked to agarose. Preadsorption: Mouse/Rat adsorbed

Target Details

Target:	IgG
Abstract:	IgG Products
Target Type:	Antibody

Application Details

Application Notes:

- **Applications:** Quality tested applications include - ELISA , FLISA FC ,
- Other referenced applications include - IHC-FS , IHC-PS , WB
- **Working Dilutions:** ELISA AP conjugate 1:2,000 - 1:4,000 HRP conjugate 1:4,000 - 1:8,000 BIOT conjugate 1:5,000 - 1:20,000 FLISA FITC conjugate 1:200 - 1:400 PE conjugate 1 g/mL Flow Cytometry FITC conjugate 1 g/106 PE, APC, and PE/CY7 conjugates 0.1 g/106 For flow cytometry, the suggested use of these reagents is in a final volume of 100 L

Restrictions:

For Research Use only

Handling

Buffer:

0.25 mg in 1.0 mL of PBS/Sodium azide and a stabilizing agent

Preservative:

Sodium azide

Precaution of Use:

This product contains Sodium azide: a POISONOUS AND HAZARDOUS SUBSTANCE which should be handled by trained staff only.

Handling Advice:

Do not freeze!

Protect conjugated products from light.

Each reagent is stable for the period shown on the bottle label if stored as directed.

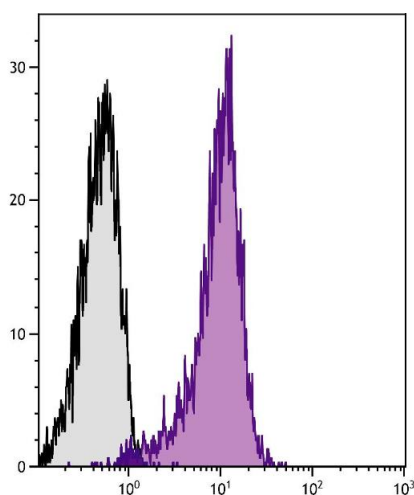
Storage:

4 °C

Storage Comment:

Store at 2-8°C

Images



Flow Cytometry

Image 1. BALB/c mouse thymocytes were stained with Hamster Anti-Mouse CD28-UNLB.