

Datasheet for ABIN376549

## Pig anti-Goat IgG (Heavy & Light Chain) Antibody (PE) - Preadsorbed



[Go to Product page](#)

### 1 Image

#### Overview

Quantity:	0.5 mg
Target:	IgG
Binding Specificity:	Heavy & Light Chain
Reactivity:	Goat
Host:	Pig
Clonality:	Polyclonal
Conjugate:	PE
Application:	ELISA

#### Product Details

Isotype:	IgG
Specificity:	Reacts with the heavy and light chains of goat IgG as demonstrated by ELISA.
Characteristics:	Swine Anti-Goat IgG(H+L), Human/Rat/Mouse SP ads-PE
Purification:	<b>Purification Method:</b> Affinity chromatography on goat IgG covalently linked to agarose. Preadsorption: Human/Rat/Mouse SP adsorbed

#### Target Details

Target:	IgG
Abstract:	<a href="#">IgG Products</a>
Target Type:	Antibody

## Application Details

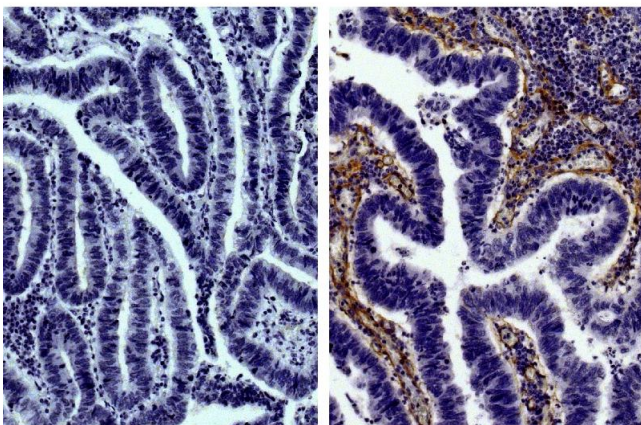
Application Notes:	<ul style="list-style-type: none"><li>• <b>Applications:</b> Quality tested applications include - ELISA FLISA</li><li>• Other referenced applications include - FC , IHC-FS , WB</li><li>• <b>Working Dilutions:</b> ELISA AP conjugate 1:2,000 - 1:4,000 HRP conjugate 1:4,000 - 1:8,000 BIOT conjugate 1:5,000 - 1:20,000 FLISA FITC conjugate 1:200 - 1:400 PE conjugate <math>\leq 1</math> g/mL</li></ul>
--------------------	---

Restrictions: For Research Use only

## Handling

Concentration:	0.5 mg/mL
Buffer:	0.5 mg in 1.0 mL of PBS/Sodium azide and a stabilizing agent
Preservative:	Sodium azide
Precaution of Use:	This product contains Sodium azide: a POISONOUS AND HAZARDOUS SUBSTANCE which should be handled by trained staff only.
Handling Advice:	<b>Do not freeze!</b> <b>Protect conjugated products from light.</b> Each reagent is stable for the period shown on the bottle label if stored as directed.
Storage:	4 °C
Storage Comment:	Store at 2-8°C

## Images



### Immunohistochemistry

**Image 1.** Paraffin embedded human gastric cancer tissue was stained with Goat IgG-UNLB isotype control, DAB, and hematoxylin.