

Datasheet for ABIN376551

**Donkey anti-Mouse IgG (Heavy & Light Chain) Antibody (PE) -  
Preadsorbed**[Go to Product page](#)**1** Image

## Overview

Quantity:	0.5 mg
Target:	IgG
Binding Specificity:	Heavy & Light Chain
Reactivity:	Mouse
Host:	Donkey
Clonality:	Polyclonal
Conjugate:	PE
Application:	ELISA

## Product Details

Isotype:	IgG
Specificity:	Reacts with the heavy and light chains of mouse IgG and the light chains of mouse IgM and IgA
Characteristics:	Donkey Anti-Mouse IgG(H+L), Human SP ads-PE
Purification:	<b>Purification Method:</b> Affinity chromatography on mouse IgG covalently linked to agarose. Preadsorption: Human SP adsorbed

## Target Details

Target:	IgG
Abstract:	<a href="#">IgG Products</a>
Target Type:	Antibody

## Application Details

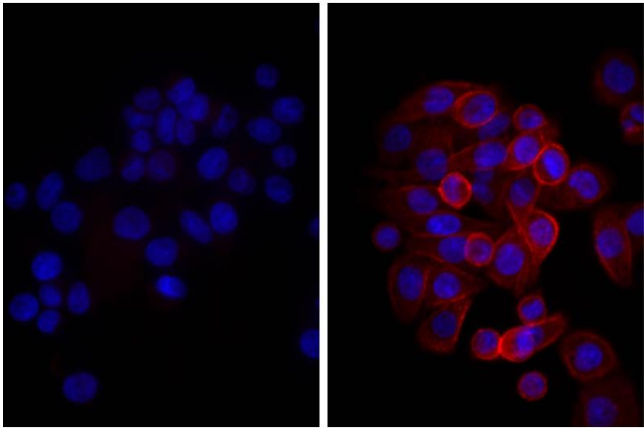
Application Notes:	<ul style="list-style-type: none"><li>• <b>Applications:</b> Quality tested applications include - ELISA , FLISA</li><li>• Other referenced applications include - FC , IHC-FS , ICC</li><li>• <b>Working Dilutions:</b> ELISA AP conjugate 1:2,000 - 1:4,000 HRP conjugate 1:4,000 - 1:8,000 BIOT conjugate 1:5,000 - 1:20,000 FLISA FITC and AF488 conjugates 1:200 - 1:400 AF555 conjugate 1:100 - 1:200 PE conjugate <math>\leq 1</math> g/mL Flow Cytometry FITC conjugate <math>\leq 1</math> g/106 PE conjugate <math>\leq 0.1</math> g/106 For flow cytometry, the suggested use of these reagents is in a final volume of 100 L</li></ul>
--------------------	--

Restrictions:	For Research Use only
---------------	-----------------------

## Handling

Concentration:	0.5 mg/mL
Buffer:	0.5 mg in 1.0 mL of PBS/Sodium azide and a stabilizing agent
Preservative:	Sodium azide
Precaution of Use:	This product contains Sodium azide: a POISONOUS AND HAZARDOUS SUBSTANCE which should be handled by trained staff only.
Handling Advice:	<p><b>Do not freeze!</b></p> <p><b>Protect conjugated products from light.</b></p> <p>Each reagent is stable for the period shown on the bottle label if stored as directed.</p>
Storage:	4 °C
Storage Comment:	Store at 2-8°C

## Images



### Immunofluorescence

**Image 1.** Human pancreatic carcinoma cell line MIA PaCa-2 was stained with Mouse Anti-Human CD44-UNLB, and DAPI.