

Datasheet for ABIN376553

**Donkey anti-Rat IgG (Heavy & Light Chain) Antibody (PE) -
Preadsorbed**[Go to Product page](#)**1** Image

Overview

Quantity:	0.5 mg
Target:	IgG
Binding Specificity:	Heavy & Light Chain
Reactivity:	Rat
Host:	Donkey
Clonality:	Polyclonal
Conjugate:	PE
Application:	ELISA

Product Details

Isotype:	IgG
Specificity:	Reacts with the heavy and light chains of rat IgG and the light chains of rat IgM
Characteristics:	Donkey Anti-Rat IgG(H+L), Mouse SP ads-PE
Purification:	Purification Method: Affinity chromatography on rat IgG covalently linked to agarose. Preadsorption: Mouse SP adsorbed

Target Details

Target:	IgG
Abstract:	IgG Products
Target Type:	Antibody

Application Details

Application Notes:	<ul style="list-style-type: none">• Applications: Quality tested applications include - ELISA FLISA• Other referenced applications include - IHC-PS , ICC , WB• Working Dilutions: ELISA AP conjugate 1:2,000 - 1:4,000 HRP conjugate 1:4,000 - 1:8,000 BIOT conjugate 1:5,000 - 1:20,000 FLISA FITC, AF488, and AF555 conjugates 1:200 - 1:400 PE and AF647 conjugates ≤ 1 g/mL
--------------------	--

Restrictions:	For Research Use only
---------------	-----------------------

Handling

Concentration:	0.5 mg/mL
Buffer:	0.5 mg in 1.0 mL of PBS/Sodium azide and a stabilizing agent
Preservative:	Sodium azide
Precaution of Use:	This product contains Sodium azide: a POISONOUS AND HAZARDOUS SUBSTANCE which should be handled by trained staff only.
Handling Advice:	<p>Do not freeze!</p> <p>Protect conjugated products from light.</p> <p>Each reagent is stable for the period shown on the bottle label if stored as directed.</p>
Storage:	4 °C
Storage Comment:	Store at 2-8°C

Images

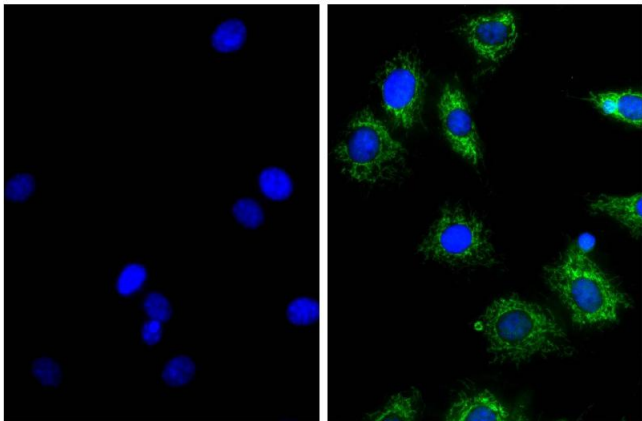


Image 1. NIH/Swiss mouse fibroblast cell line 3T3 was stained with Rat Anti- β -Actin-UNLB (right) followed by Donkey Anti-Rat IgG(H+L), Mouse SP ads-AF488 and DAPI.