

Datasheet for ABIN376554

**Donkey anti-Rabbit IgG (Heavy & Light Chain) Antibody (PE) -  
Preadsorbed**[Go to Product page](#)**1** Image

## Overview

Quantity:	0.5 mg
Target:	IgG
Binding Specificity:	Heavy & Light Chain
Reactivity:	Rabbit
Host:	Donkey
Clonality:	Polyclonal
Conjugate:	PE
Application:	ELISA

## Product Details

Isotype:	IgG
Specificity:	Reacts with the heavy and light chains of rabbit IgG and the light chains of rabbit IgM
Characteristics:	Donkey Anti-Rabbit IgG(H+L), Mouse/Rat/Human SP ads-PE
Purification:	<b>Purification Method:</b> Affinity chromatography on rabbit IgG covalently linked to agarose. Preadsorption: Mouse/Rat/Human SP adsorbed

## Target Details

Target:	IgG
Abstract:	<a href="#">IgG Products</a>
Target Type:	Antibody

## Application Details

---

Application Notes:

- **Applications:** Quality tested applications include - ELISA , FLISA
- Other referenced applications include - FC , IHC-PS , ICC , WB
- **Working Dilutions:** ELISA AP conjugate 1:2,000 - 1:4,000 HRP conjugate 1:4,000 - 1:8,000 BIOT conjugate 1:5,000 - 1:20,000 FLISA FITC, AF488, and AF555 conjugates 1:100 - 1:400 PE and AF647 conjugates  $\leq 1$  g/mL

Restrictions: For Research Use only

## Handling

---

Concentration: 0.5 mg/mL

Buffer: 0.5 mg in 1.0 mL of PBS/Sodium azide and a stabilizing agent

Preservative: Sodium azide

Precaution of Use: This product contains Sodium azide: a POISONOUS AND HAZARDOUS SUBSTANCE which should be handled by trained staff only.

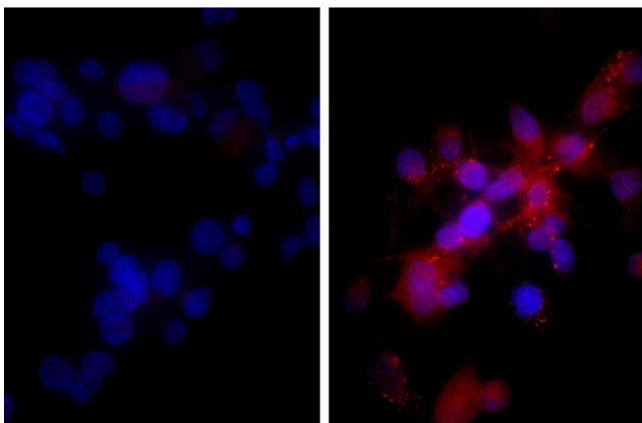
Handling Advice: **Do not freeze!**  
**Protect conjugated products from light.**  
Each reagent is stable for the period shown on the bottle label if stored as directed.

Storage: 4 °C

Storage Comment: Store at 2-8°C

## Images

---



**Image 1.** Human hepatocellular carcinoma cell line Hep G2 was stained with Rabbit IgG-UNLB isotype control, and DAPI.