



[Go to Product page](#)

Datasheet for ABIN376558

Neutralite Avidin-PE

1 Image

Overview

Quantity:	0.5 mg
Reactivity:	Avian
Host:	Chicken eggs
Conjugate:	PE
Application:	ELISA, Flow Cytometry (FACS)

Product Details

Specificity:	Biotin
Characteristics:	Neutralite Avidin-PE

Application Details

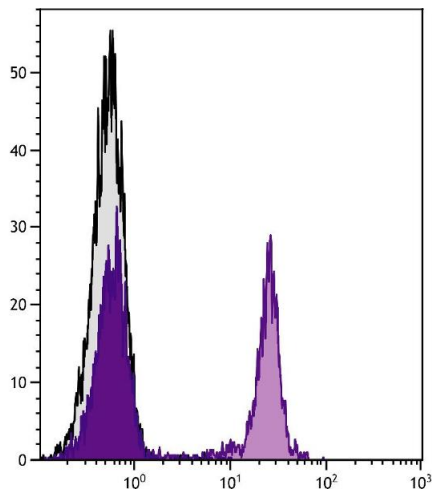
Application Notes:	<ul style="list-style-type: none">• Applications: Quality tested applications include - ELISA , FLISA FC ,• Other referenced applications include - ELISPOT , IHC-FS , IHC-PS , ICC , WB , Microarray• Working Dilutions: Flow Cytometry FITC, CY2, and CY3 conjugates 1 g/106 cells PE, APC, SPRD, and CY5 conjugates 0.2 g/106 cells For flow cytometry, the suggested use of these reagents is in a final volume of 100 L FLISA FITC, TRITC, TXRD, CY2, and CY3 conjugates 1:100 - 1:400 PE, APC, and CY5 conjugates 1 g/mL ELISA AP conjugate 1:500 - 1:2,000 HRP conjugate 1:4,000 - 1:8,000 BGAL conjugate 1:500
--------------------	--

Sample Volume:	1 mL
Restrictions:	For Research Use only

Handling

Concentration:	0.5 mg/mL
Buffer:	0.5 mg in 1.0 mL of PBS/Sodium azide and a stabilizing agent
Preservative:	Sodium azide
Precaution of Use:	This product contains Sodium azide: a POISONOUS AND HAZARDOUS SUBSTANCE which should be handled by trained staff only.
Handling Advice:	Do not freeze! Protect conjugated products from light. Each reagent is stable for the period shown on the bottle label if stored as directed.
Storage:	4 °C
Storage Comment:	Store at 2-8°C

Images



Flow Cytometry

Image 1. BALB/c mouse splenocytes were stained with Rat Anti-Mouse CD45R-BIOT.