

Datasheet for ABIN376561

Mouse anti-Chicken lambda Antibody (PE)[Go to Product page](#)**1** Image

Overview

Quantity:	0.1 mg
Target:	lambda
Reactivity:	Chicken
Host:	Mouse
Clonality:	Monoclonal
Conjugate:	PE
Application:	Flow Cytometry (FACS)

Product Details

Immunogen:	Affinity purified chicken Ig or isolated lymphocytes
Clone:	L-1
Isotype:	IgG1
Specificity:	Chicken Lambda, Mr 28 kDa
Characteristics:	Mouse Anti-Chicken Lambda-PE
Purification:	Purified

Target Details

Target:	lambda
---------	--------

Application Details

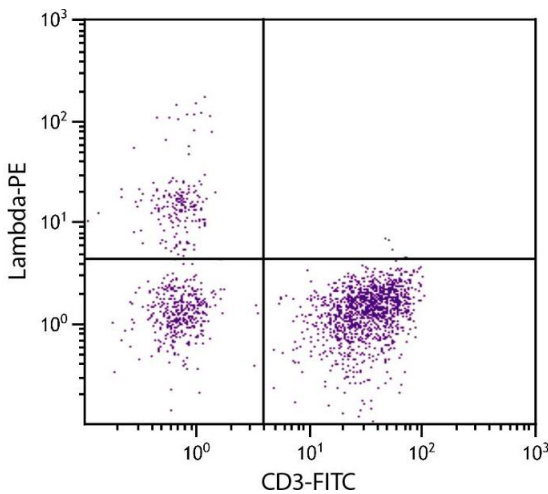
Application Notes:	<ul style="list-style-type: none">• Applications: FC - Quality tested , IHC-FS - Reported in literature , ICC - Reported in literature , IP - Reported in literature , WB - Reported in literature• Working Dilutions: Flow Cytometry FITC, BIOT, and PE conjugates 1 g/106 cells For flow cytometry, the suggested use of these reagents is in a final volume of 100 L
--------------------	--

Sample Volume:	1 mL
Restrictions:	For Research Use only

Handling

Concentration:	0.1 mg/mL
Buffer:	0.1 mg in 1.0 mL of PBS/Sodium azide and a stabilizing agent
Preservative:	Sodium azide
Precaution of Use:	This product contains Sodium azide: a POISONOUS AND HAZARDOUS SUBSTANCE which should be handled by trained staff only.
Handling Advice:	<p>Do not freeze!</p> <p>Protect conjugated products from light.</p> <p>Each reagent is stable for the period shown on the bottle label if stored as directed.</p>
Storage:	4 °C
Storage Comment:	Store at 2-8°C

Images



Flow Cytometry

Image 1. Chicken peripheral blood lymphocytes were stained with Mouse Anti-Chicken Lambda-PE.