



Datasheet for ABIN376620

Mouse IgG1 isotype control (PE-Cy7)



[Go to Product page](#)

1 Image

1 Publication

Overview

Quantity:	100 tests
Target:	IgG1
Host:	Mouse
Clonality:	Monoclonal
Conjugate:	PE-Cy7
Application:	Flow Cytometry (FACS), ELISA

Product Details

Clone:	15H6
Isotype:	IgG1
Specificity:	T-2 mycotoxin
Characteristics:	Mouse IgG1-PE/CY7
Purification:	Purified

Target Details

Target:	IgG1
Abstract:	IgG1 Products
Target Type:	Antibody

Application Details

Application Notes:

- **Applications:** FC - Quality tested , ELISA - Quality tested , FLISA - Quality tested IHC-FS - Reported in literature , IHC-PS - Reported in literature , ICC - Reported in literature , WB - Reported in literature , Block - Reported in literature , In vitro control - Reported in literature , In vivo control - Reported in literature , Multiplex - Reported in literature
- **Working Dilutions:** Flow Cytometry Purified (UNLB) antibody 1 g/106 cells BIOT conjugate 1 g/106 cells FITC, PE, PE/TXRD, APC, SPRD, CY5, PE/CY5.5, PE/CY7, 10 L/106 cells APC/CY5.5, APC/CY7, PACBLU, AF488, AF647, and AF700 conjugates For flow cytometry, the suggested use of these reagents is in a final volume of 100 L ELISA Purified (UNLB) antibody 1 - 5 g/mL AP and HRP conjugates 1:2,000 - 1:4,000

Restrictions: For Research Use only

Handling

Buffer: 100 tests in 1.0 mL of PBS/Sodium azide and a stabilizing agent

Preservative: Sodium azide

Precaution of Use: This product contains Sodium azide: a POISONOUS AND HAZARDOUS SUBSTANCE which should be handled by trained staff only.

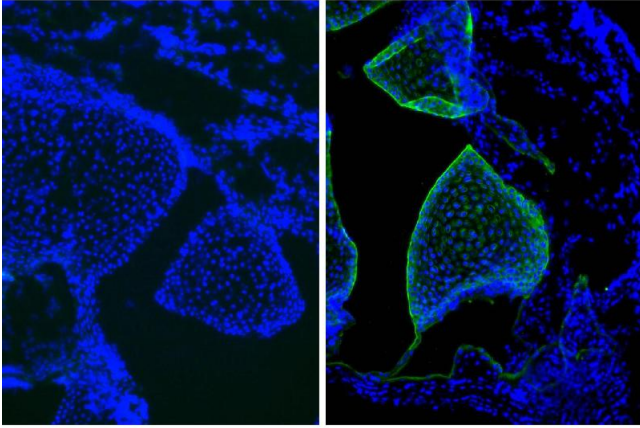
Handling Advice: **Protect conjugated products from light.**
Each reagent is stable for the period shown on the bottle label if stored as directed.

Storage: 4 °C

Storage Comment: Store at 2-8°C

Publications

Product cited in: Bishop, Valle Oseguera, Spencer: "Human Cytomegalovirus interleukin-10 promotes proliferation and migration of MCF-7 breast cancer cells." in: **Cancer cell & microenvironment**, Vol. 2, Issue 1 ([PubMed](#)).



Immunofluorescence

Image 1. Frozen newborn mouse cartilage section was stained with Mouse IgG1-UNLB isotype control and DAPI.