

Datasheet for ABIN376666

Goat anti-Rat IgG (Heavy & Light Chain) Antibody (PE-Texas Red) - Preadsorbed[Go to Product page](#)**1** Image

Overview

Quantity:	0.25 mg
Target:	IgG
Binding Specificity:	Heavy & Light Chain
Reactivity:	Rat
Host:	Goat
Clonality:	Polyclonal
Conjugate:	PE-Texas Red
Application:	ELISA, Flow Cytometry (FACS)

Product Details

Isotype:	IgG
Fragment:	F(ab') ₂ fragment
Specificity:	Reacts with the heavy and light chains of rat IgG and the light chains of rat IgM
Characteristics:	Goat F(ab') ₂ Anti-Rat IgG(H+L), Mouse ads-PE/TXRD
Purification:	Preadsorption: Mouse adsorbed

Target Details

Target:	IgG
Abstract:	IgG Products
Target Type:	Antibody

Application Details

Application Notes:

- **Applications:** Quality tested applications include - ELISA FLISA FC ,
- Other referenced applications include - IHC-FS
- **Working Dilutions:** ELISA BIOT conjugate 1:5,000 - 1:20,000 FLISA FITC and TXRD conjugates 1:100 - 1:400 PE conjugate 1 g/mL Flow Cytometry FITC and BIOT conjugates 1 g/10⁶ cells PE, PE/TXRD, SPRD, and PE/CY5.5 conjugates 0.1 g/10⁶ cells For flow cytometry, the suggested use of these reagents is in a final volume of 100 L

Comment: Texas Red™ is a registered trademark of Molecular Probes Inc.

Restrictions: For Research Use only

Handling

Buffer: 0.25 mg in 1.0 mL of PBS/Sodium azide and a stabilizing agent

Preservative: Sodium azide

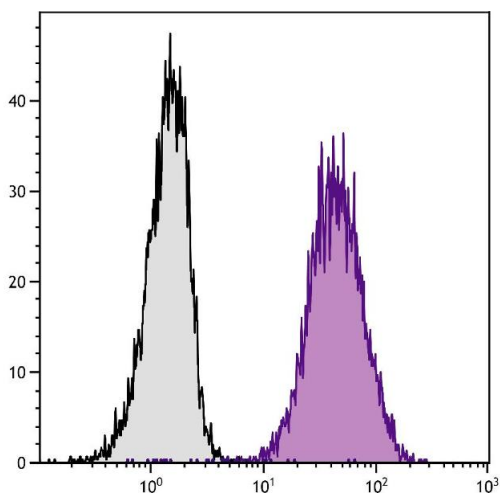
Precaution of Use: This product contains Sodium azide: a POISONOUS AND HAZARDOUS SUBSTANCE which should be handled by trained staff only.

Handling Advice: **Protect conjugated products from light.**
Each reagent is stable for the period shown on the bottle label if stored as directed.

Storage: 4 °C

Storage Comment: Store at 2-8°C

Images



Flow Cytometry

Image 1. BALB/c mouse splenocytes were stained with Rat Anti-Mouse CD45-UNLB.