

Datasheet for ABIN376693

**Goat IgG isotype control (SPRD)**[Go to Product page](#)**1** Image

## Overview

Quantity:	100 tests
Target:	IgG
Host:	Goat
Clonality:	Polyclonal
Conjugate:	SPRD
Application:	ELISA, Flow Cytometry (FACS)

## Product Details

Isotype:	IgG
Characteristics:	Goat IgG-SPRD
Purification:	Purified

## Target Details

Target:	IgG
Abstract:	<a href="#">IgG Products</a>
Target Type:	Antibody

## Application Details

Application Notes:	<ul style="list-style-type: none"><li>• <b>Applications:</b> Quality tested applications include - FC , ELISA FLISA</li><li>• Other referenced applications include - IHC-FS , IHC-PS , IHC-WM , ICC , IP , Block , In vitro control , In vivo control</li></ul>
--------------------	--

## Application Details

- **Working Dilutions:** Flow Cytometry BIOT conjugate 1 g/106 cells FITC, PE, APC, SPRD, CY5, and PE/CY5.5 conjugates 10 L/106 cells For flow cytometry, the suggested use of these reagents is in a final volume of 100 L FLISA TRITC and TXRD conjugates 1:100 - 1:400

Restrictions: For Research Use only

## Handling

Buffer: 100 tests in 1.0 mL of PBS/Sodium azide and a stabilizing agent

Preservative: Sodium azide

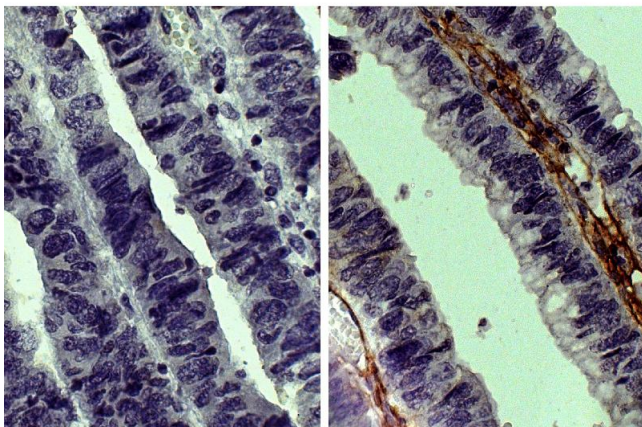
Precaution of Use: This product contains Sodium azide: a POISONOUS AND HAZARDOUS SUBSTANCE which should be handled by trained staff only.

Handling Advice: **Do not freeze!**  
**Protect conjugated products from light.**  
Each reagent is stable for the period shown on the bottle label if stored as directed.

Storage: 4 °C

Storage Comment: Store at 2-8°C

## Images



### Immunohistochemistry

**Image 1.** Paraffin embedded human gastric cancer tissue was stained with Goat IgG-UNLB isotype control, DAB, and hematoxylin.