



[Go to Product page](#)

Datasheet for ABIN376716  
**anti-TCRb antibody (SPRD)**

1 Image

### Overview

Quantity:	0.1 mg
Target:	TCRb
Reactivity:	Mouse
Host:	Hamster
Clonality:	Monoclonal
Conjugate:	This TCRb antibody is conjugated to SPRD
Application:	Flow Cytometry (FACS)

### Product Details

Brand:	Spectral Red™
Immunogen:	TCR affinity purified from mouse T-cell hybridoma DO-11.10
Clone:	H57-597
Isotype:	IgG
Specificity:	Mouse TCRβ
Characteristics:	Hamster Anti-Mouse TCRb-SPRD
Purification:	Purified

### Target Details

Target:	TCRb
Alternative Name:	TCRb ( <a href="#">TCRb Products</a> )

## Application Details

---

Application Notes:

- **Applications:** FC - Quality tested , IHC - Reported in literature , ICC - Reported in literature , IP - Reported in literature , Stim - Reported in literature , Depletion - Reported in literature , Sep - Reported in literature
- **Working Dilutions:** Flow Cytometry FITC, BIOT, and AF488 conjugates 2 g/106 cells PACBLU conjugate 0.3 g/106 cells PE, APC, SPRD, PE/CY5.5, AF647, and AF700 conjugates 0.2 g/106 cells For flow cytometry, the suggested use of these reagents is in a final volume of 100 L

---

Comment: In vitro stimulation of ab TCR-expressing T cells, In vitro and in vivo depletion of ab TCR-bearing cells

---

Sample Volume: 1 mL

---

Restrictions: For Research Use only

## Handling

---

Concentration: 0.1 mg/mL

---

Buffer: 0.1 mg in 1.0 mL of PBS/Sodium azide and a stabilizing agent

---

Preservative: Sodium azide

---

Precaution of Use: This product contains Sodium azide: a POISONOUS AND HAZARDOUS SUBSTANCE which should be handled by trained staff only.

---

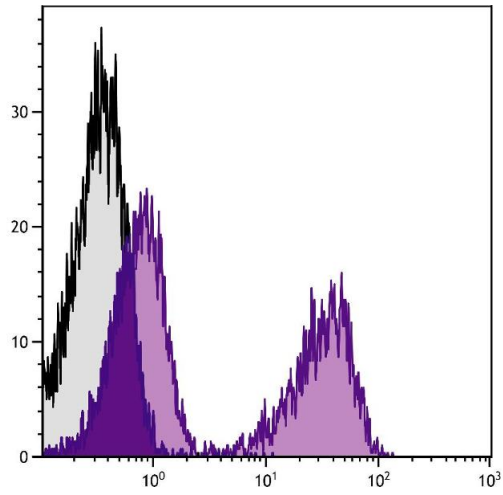
Handling Advice: **Do not freeze!**  
**Protect conjugated products from light.**  
Each reagent is stable for the period shown on the bottle label if stored as directed.

---

Storage: 4 °C

---

Storage Comment: Store at 2-8°C



### Flow Cytometry

**Image 1.** BALB/c mouse splenocytes were stained with Hamster Anti-Mouse TCR $\beta$ -SPRD.