

Datasheet for ABIN376719

**Goat anti-Rat IgG (Heavy & Light Chain) Antibody (SPRD) -  
Preadsorbed**[Go to Product page](#)**1** Image

## Overview

Quantity:	0.25 mg
Target:	IgG
Binding Specificity:	Heavy & Light Chain
Reactivity:	Rat
Host:	Goat
Clonality:	Polyclonal
Conjugate:	SPRD
Application:	ELISA, Flow Cytometry (FACS)

## Product Details

Isotype:	IgG
Fragment:	F(ab') <sub>2</sub> fragment
Specificity:	Reacts with the heavy and light chains of rat IgG and the light chains of rat IgM
Characteristics:	Goat F(ab') <sub>2</sub> Anti-Rat IgG(H+L), Mouse ads-SPRD
Purification:	Preadsorption: Mouse adsorbed

## Target Details

Target:	IgG
Abstract:	<a href="#">IgG Products</a>
Target Type:	Antibody

## Application Details

### Application Notes:

- **Applications:** Quality tested applications include - ELISA FLISA FC ,
- Other referenced applications include - IHC-FS
- **Working Dilutions:** ELISA BIOT conjugate 1:5,000 - 1:20,000 FLISA FITC and TXRD conjugates 1:100 - 1:400 PE conjugate 1 g/mL Flow Cytometry FITC and BIOT conjugates 1 g/10<sup>6</sup> cells PE, PE/TXRD, SPRD, and PE/CY5.5 conjugates 0.1 g/10<sup>6</sup> cells For flow cytometry, the suggested use of these reagents is in a final volume of 100 L

### Restrictions:

For Research Use only

## Handling

### Buffer:

0.25 mg in 1.0 mL of PBS/Sodium azide and a stabilizing agent

### Preservative:

Sodium azide

### Precaution of Use:

This product contains Sodium azide: a POISONOUS AND HAZARDOUS SUBSTANCE which should be handled by trained staff only.

### Handling Advice:

**Do not freeze!**

**Protect conjugated products from light.**

Each reagent is stable for the period shown on the bottle label if stored as directed.

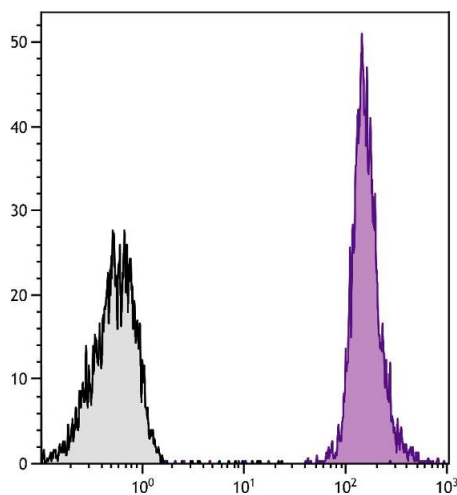
### Storage:

4 °C

### Storage Comment:

Store at 2-8°C

## Images



### Flow Cytometry

**Image 1.** BALB/c mouse splenocytes were stained with Rat Anti-Mouse CD45-UNLB.