

Datasheet for ABIN376720

## Goat anti-Rabbit IgG (Heavy & Light Chain) Antibody (SPRD) - Preadsorbed



[Go to Product page](#)

### 1 Image

#### Overview

Quantity:	0.25 mg
Target:	IgG
Binding Specificity:	Heavy & Light Chain
Reactivity:	Rabbit
Host:	Goat
Clonality:	Polyclonal
Conjugate:	SPRD
Application:	ELISA, Flow Cytometry (FACS)

#### Product Details

Isotype:	IgG
Specificity:	Reacts with the heavy and light chains of rabbit IgG and the light chains of rabbit IgM
Characteristics:	Goat Anti-Rabbit IgG(H+L), Mouse/Human ads-SPRD
Purification:	<b>Purification Method:</b> Affinity chromatography on pooled rabbit IgG covalently linked to agarose. Preadsorption: Mouse/Human adsorbed

#### Target Details

Target:	IgG
Abstract:	<a href="#">IgG Products</a>

## Target Details

Target Type: Antibody

## Application Details

Application Notes:

- **Applications:** Quality tested applications include - ELISA , FLISA FC ,
- Other referenced applications include - IHC-FS , IHC-PS , IHC-WM , ICC , WB , Sep
- **Working Dilutions:** ELISA AP conjugate 1:2,000 - 1:4,000 HRP conjugate 1:4,000 - 1:8,000 BIOT conjugate 1:5,000 - 1:20,000 FLISA FITC, TRITC, TXRD, AF488, and AF555 conjugates 1:100 - 1:400 PE, APC, and AF647 conjugates  $\leq 1 \mu\text{g/mL}$  Flow Cytometry FITC, BIOT, and AF488 conjugates  $\leq 1 \mu\text{g}/10^6$  cells PE, APC, SPRD, and AF647 conjugates  $\leq 0.1 \mu\text{g}/10^6$  cells For flow cytometry, the suggested use of these reagents is in a final volume of 100  $\mu\text{L}$

Restrictions: For Research Use only

## Handling

Buffer: 0.25 mg in 1.0 mL of PBS/Sodium azide and a stabilizing agent

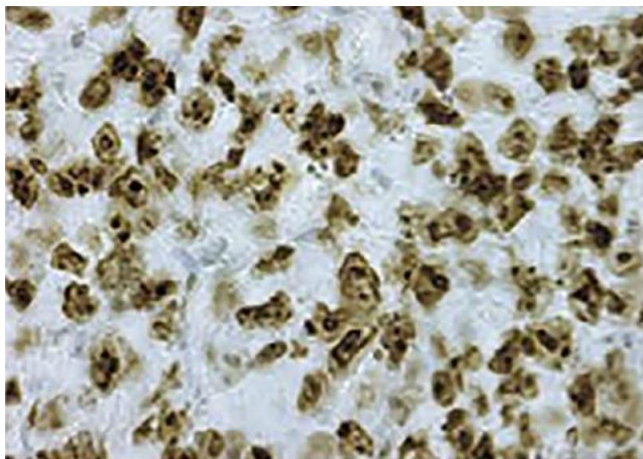
Preservative: Sodium azide

Precaution of Use: This product contains Sodium azide: a POISONOUS AND HAZARDOUS SUBSTANCE which should be handled by trained staff only.

Handling Advice: **Do not freeze!**  
**Protect conjugated products from light.**  
Each reagent is stable for the period shown on the bottle label if stored as directed.

Storage: 4 °C

Storage Comment: Store at 2-8°C



#### Immunohistochemistry

**Image 1.** Paraffin embedded NB-9464 induced mouse tumor tissue was stained with anti-Ki-67 followed by Goat Anti-Rabbit IgG(H+L), Mouse/Human ads-HRP