

Datasheet for ABIN376721

**Rat anti-Rabbit Ig Antibody (SPRD)**[Go to Product page](#)**1** Image

## Overview

|              |                              |
|--------------|------------------------------|
| Quantity:    | 0.1 mg                       |
| Target:      | Ig                           |
| Reactivity:  | Rabbit                       |
| Host:        | Rat                          |
| Clonality:   | Monoclonal                   |
| Conjugate:   | SPRD                         |
| Application: | ELISA, Flow Cytometry (FACS) |

## Product Details

|                  |  |
|------------------|--|
| Immunogen:       | Rabbit IgG and IgM   |
| Clone:           | SB87a  |
| Isotype:         | IgG2a  |
| Specificity:     | Rabbit IgG, IgM, and IgA Minimal reactivity to human, mouse, rat, hamster, goat, sheep, porcine, canine, and rhesus IgG and guinea pig serum |
| Characteristics: | Rat Anti-Rabbit Ig-SPRD  |
| Purification:    | Purified   |

## Target Details

|           |                             |
|-----------|-----------------------------|
| Target:   | Ig                          |
| Abstract: | <a href="#">Ig Products</a> |

## Application Details

Application Notes:

- **Applications:** ELISA - Quality tested , FLISA - Quality tested FC - Quality tested
- **Working Dilutions:** ELISA HRP conjugate 1:4,000 - 1:8,000 BIOT conjugate 1:5,000 - 1:10,000  
FLISA PE conjugate 1 g/mL Flow Cytometry BIOT conjugate 1 g/10<sup>6</sup> cells PE and SPRD conjugates 0.1 g/10<sup>6</sup> cells For flow cytometry, the suggested use of these reagents is in a final volume of 100 l

Restrictions: For Research Use only

## Handling

Concentration: 0.5 mg/mL

Buffer: 0.1 mg in 0.2 mL of PBS/Sodium azide and a stabilizing agent

Preservative: Sodium azide

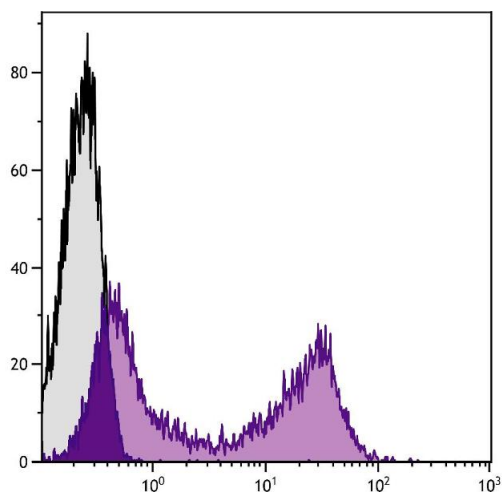
Precaution of Use: This product contains Sodium azide: a POISONOUS AND HAZARDOUS SUBSTANCE which should be handled by trained staff only.

Handling Advice: **Do not freeze!**  
**Protect conjugated products from light.**  
Each reagent is stable for the period shown on the bottle label if stored as directed.

Storage: 4 °C

Storage Comment: Store at 2-8°C

## Images



### Flow Cytometry

**Image 1.** Rabbit peripheral blood lymphocytes were stained with Rat Anti-Rabbit Ig-BIOT.