



[Go to Product page](#)

Datasheet for ABIN376732

Mouse anti-Human IgM Antibody (SPRD)

1 Image

Overview

Quantity:	0.1 mg
Target:	IgM
Reactivity:	Human
Host:	Mouse
Clonality:	Monoclonal
Conjugate:	SPRD
Application:	ELISA, Flow Cytometry (FACS)

Product Details

Immunogen:	Unknown
Clone:	UHB
Isotype:	IgG3
Specificity:	Human IgM, Mr 900 kDa
Characteristics:	Mouse Anti-Human IgM-SPRD
Purification:	Purified

Target Details

Target:	IgM
Abstract:	IgM Products
Target Type:	Antibody

Application Details

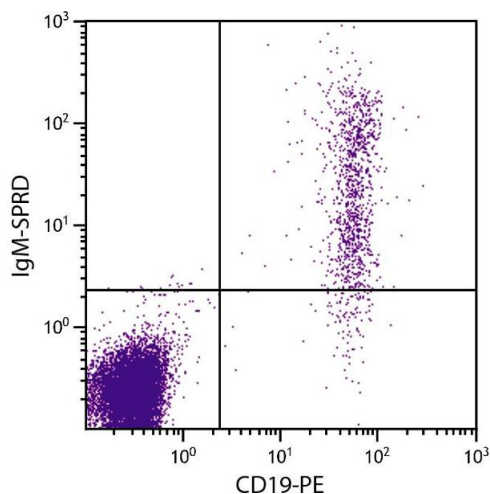
Application Notes:	<ul style="list-style-type: none">• Applications: ELISA - Quality tested , FLISA - Quality tested FC - Quality tested , WB , Stim - Reported in literature• Working Dilutions: ELISA AP conjugate 1:500 - 1:1,000 HRP conjugate 1:4,000 - 1:8,000 BIOT conjugate 1:5,000 - 1:10,000 FLISA FITC conjugate 1:200 - 1:400 PE conjugate 1 g/mL Flow Cytometry Purified (UNLB) antibody 1 g/106 cells FITC and BIOT conjugates 1 g/106 cells PE and SPRD conjugates 0.1 g/106 cells For flow cytometry, the suggested use of these reagents is in a final volume of 100 L
--------------------	---

Restrictions: For Research Use only

Handling

Concentration:	0.1 mg/mL
Buffer:	0.1 mg in 1.0 mL of PBS/Sodium azide and a stabilizing agent
Preservative:	Sodium azide
Precaution of Use:	This product contains Sodium azide: a POISONOUS AND HAZARDOUS SUBSTANCE which should be handled by trained staff only.
Handling Advice:	Do not freeze! Protect conjugated products from light. Each reagent is stable for the period shown on the bottle label if stored as directed.
Storage:	4 °C
Storage Comment:	Store at 2-8°C

Images



Flow Cytometry

Image 1. Human peripheral blood lymphocytes were stained with Mouse Anti-Human IgM-SPRD.