



[Go to Product page](#)

Datasheet for ABIN376747

## Goat anti-Mouse IgG (Heavy & Light Chain) Antibody (TRITC)

1 Image

1 Publication

### Overview

Quantity:	1 mg
Target:	IgG
Binding Specificity:	Heavy & Light Chain
Reactivity:	Mouse
Host:	Goat
Clonality:	Polyclonal
Conjugate:	TRITC
Application:	ELISA, Immunohistochemistry (IHC), Flow Cytometry (FACS)

### Product Details

Isotype:	IgG
Specificity:	Reacts with the heavy and light chains of mouse IgG 1, IgG 2a, IgG 2b and IgG 3, and with the light chains of mouse IgM and IgA as demonstrated by ELISA and flow cytometry.
Characteristics:	Source: Pooled antisera from goats hyperimmunized with mouse IgG paraproteins. To insure lot-to-lot consistency, each batch of product is tested by ELISA, PCFIA and/or flow cytometry to conform to characteristics of a standard reference reagent.
Purification:	Affinity chromatography on pooled mouse IgG covalently linked to agarose.

### Target Details

Target:	IgG
Abstract:	<a href="#">IgG Products</a>

## Target Details

---

Target Type: Antibody

## Application Details

---

Application Notes: Working Dilution:  
<= 1 µg/10<sup>6</sup> cells  
Representative data are included in this product insert.

Each laboratory should determine an optimum working titer for use in its particular application. Other applications have not been tested but use in such assays should not necessarily be excluded.

Restrictions: For Research Use only

## Handling

---

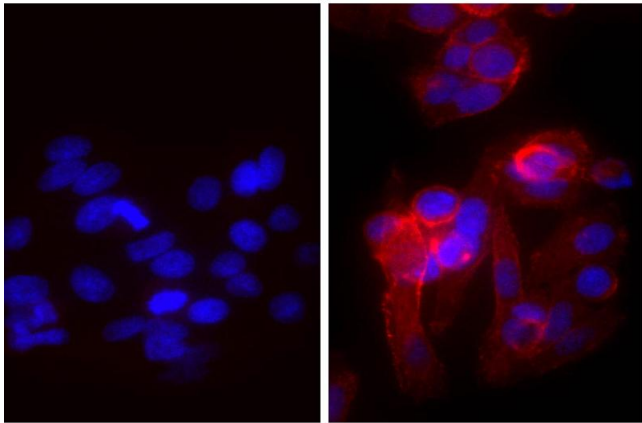
Handling Advice: **Protect conjugated products from light.**  
Each reagent is stable for the period shown on the bottle label if stored as directed.

Storage: 4 °C

## Publications

---

Product cited in: Prescher, Baumgärtel, Ivanchenko, Torrano, Bräuchle, Müller, Lamb: "Super-resolution imaging of ESCRT-proteins at HIV-1 assembly sites." in: **PLoS pathogens**, Vol. 11, Issue 2, pp. e1004677, (2016) ([PubMed](#)).



**Image 1.** Human epithelial carcinoma cell line HEp-2 was stained with Mouse Anti-Human CD44-UNLB and DAPI.