



[Go to Product page](#)

Datasheet for ABIN376753

Goat anti-Mouse IgG2a (Heavy Chain) Antibody (TRITC)

1 Image

3 Publications

Overview

Quantity:	1 mg
Target:	IgG2a
Binding Specificity:	Heavy Chain
Reactivity:	Mouse
Host:	Goat
Clonality:	Polyclonal
Conjugate:	TRITC
Application:	ELISA, Flow Cytometry (FACS), Immunohistochemistry (IHC)

Product Details

Isotype:	IgG
Specificity:	Reacts with the heavy chain of mouse IgG 2a as demonstrated by ELISA and flow cytometry.
Characteristics:	Source: Pooled antisera from goats hyperimmunized with mouse IgG 2a paraproteins. To insure lot-to-lot consistency, each batch of product is tested by ELISA, PCFIA and/or flow cytometry for conformance with characteristics of a standard reference reagent.
Purification:	Affinity chromatography on mouse IgG 2a covalently linked to agarose.

Target Details

Target:	IgG2a
Abstract:	IgG2a Products

Target Details

Target Type: Antibody

Application Details

Application Notes: Working Dilution:
<= 1 µg/10⁶ cells
Representative data are included in this product insert.

Each laboratory should determine an optimum working titer for use in its particular application. Other applications have not been tested but use in such assays should not necessarily be excluded.

Restrictions: For Research Use only

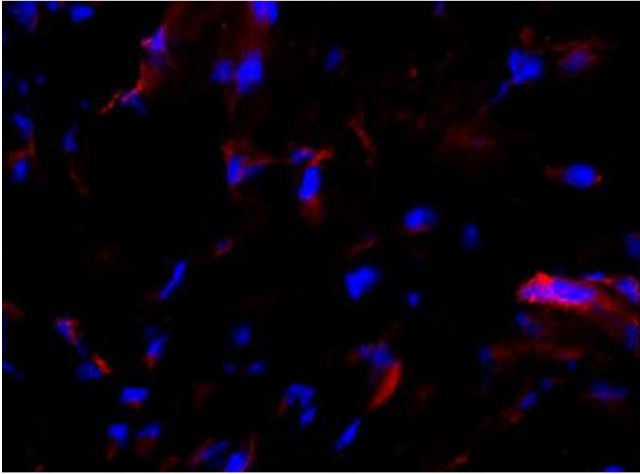
Handling

Handling Advice: **Protect conjugated products from light.**
Each reagent is stable for the period shown on the bottle label if stored as directed.

Storage: 4 °C

Publications

Product cited in: Bishop, Valle Oseguera, Spencer: "Human Cytomegalovirus interleukin-10 promotes proliferation and migration of MCF-7 breast cancer cells." in: **Cancer cell & microenvironment**, Vol. 2, Issue 1 ([PubMed](#)).



Immunofluorescence

Image 1. Frozen equine sacroid tissue section was stained with anti-MHC I followed by Goat Anti-Mouse IgG2a, Human ads-TRITC