



[Go to Product page](#)

Datasheet for ABIN376760

## Goat anti-Human IgA (Heavy Chain) Antibody (TRITC)

### 1 Image

#### Overview

Quantity:	1 mg
Target:	IgA
Binding Specificity:	Heavy Chain
Reactivity:	Human
Host:	Goat
Clonality:	Polyclonal
Conjugate:	TRITC
Application:	ELISA, Flow Cytometry (FACS)

#### Product Details

Isotype:	IgG
Specificity:	Reacts with the heavy chain of human IgA as demonstrated by ELISA and flow cytometry.
Characteristics:	Source: Pooled antisera from goats hyperimmunized with human IgA paraproteins. To insure lot-to-lot consistency, each batch of product is tested by ELISA, PCFIA and/or flow cytometry for conformance to characteristics of a standard reference reagent.
Purification:	Affinity chromatography on pooled human Igs with $\lambda$ light chains covalently linked to agarose.

#### Target Details

Target:	IgA
Abstract:	<a href="#">IgA Products</a>

## Target Details

---

Target Type: Antibody

## Application Details

---

Application Notes: Working Dilution:  
<= 1 µg/10<sup>6</sup> cells  
Representative data are included in this product insert.

Each laboratory should determine an optimum working titer for use in its particular application. Other applications have not been tested but use in such assays should not necessarily be excluded.

Restrictions: For Research Use only

## Handling

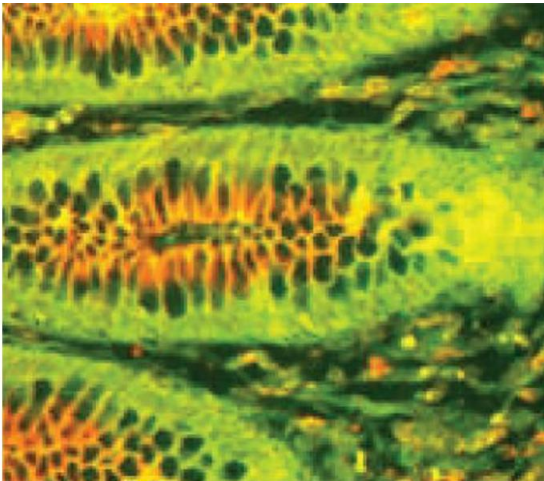
---

Handling Advice: **Protect conjugated products from light.**  
Each reagent is stable for the period shown on the bottle label if stored as directed.

Storage: 4 °C

## Images

---



### Immunohistochemistry

**Image 1.** Paraffin embedded human intestinal epithelium section was stained with Goat Anti-Human IgA-TRITC and FITC conjugated anti-secretory component.

Image from Liu D, Jiang W, Liu P. Reduction of the amount of intestinal secretory IgA in fulminant hepatic failure. Braz J Med Biol Res. 2011;44:477-82. Figure 2