

Datasheet for ABIN376778

Goat anti-Mouse Ig (Heavy & Light Chain) Antibody (Texas Red (TR))

[Go to Product page](#)

1 Image

Overview

Quantity:	1 mg
Target:	Ig
Binding Specificity:	Heavy & Light Chain
Reactivity:	Mouse
Host:	Goat
Clonality:	Polyclonal
Conjugate:	Texas Red (TR)
Application:	ELISA, Flow Cytometry (FACS), Immunohistochemistry (IHC)

Product Details

Isotype:	IgG
Specificity:	Reacts with the heavy and light chains of mouse IgM, IgG 1, IgG 2a, IgG 2b, IgG 3 and IgA as demonstrated by ELISA and flow cytometry.
Characteristics:	Source: Pooled antisera from goats hyperimmunized with mouse IgM, IgG and IgA paraproteins. To insure lot-to-lot consistency, each batch of product is tested by ELISA, PCFIA and/or flow cytometry to conform to characteristics of a standard reference reagent.
Purification:	Affinity chromatography on pooled mouse IgM+IgG+IgA covalently linked to agarose.

Target Details

Target:	Ig
---------	----

Target Details

Abstract: [Ig Products](#)

Application Details

Application Notes: Working Dilution:
<= 1 µg/10⁶ cells
Representative data are included in this product insert.

Each laboratory should determine an optimum working titer for use in its particular application. Other applications have not been tested but use in such assays should not necessarily be excluded.

Comment: Texas Red™ is a registered trademark of Molecular Probes Inc.

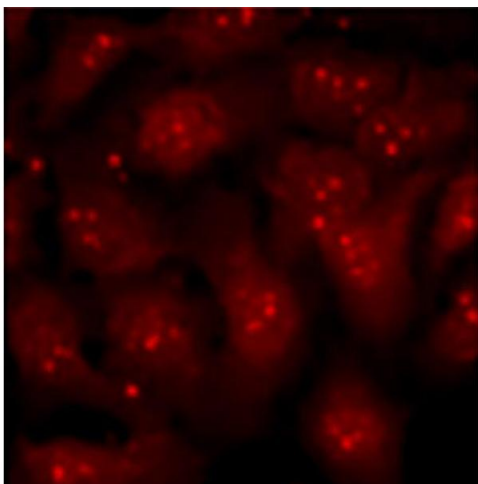
Restrictions: For Research Use only

Handling

Handling Advice: **Protect conjugated products from light.**
Each reagent is stable for the period shown on the bottle label if stored as directed.

Storage: 4 °C

Images



Immunofluorescence

Image 1. U2-OS cells stimulated with tetradecanoylphorbol acetate and treated with MEK and p38 inhibitors were stained with anti-Bmi1 followed by Goat Anti-Mouse Ig, Human ads-TXRD