

Datasheet for ABIN376782

Goat anti-Mouse IgG (Heavy & Light Chain) Antibody (Texas Red (TR))

[Go to Product page](#)

1 Image

Overview

| | |
|----------------------|--|
| Quantity: | 1 mg |
| Target: | IgG |
| Binding Specificity: | Heavy & Light Chain |
| Reactivity: | Mouse |
| Host: | Goat |
| Clonality: | Polyclonal |
| Conjugate: | Texas Red (TR) |
| Application: | ELISA, Immunohistochemistry (IHC), Flow Cytometry (FACS) |

Product Details

| | |
|------------------|--|
| Isotype: | IgG |
| Specificity: | Reacts with the heavy and light chains of mouse IgG 1, IgG 2a, IgG 2b and IgG 3, and with the light chains of mouse IgM and IgA as demonstrated by ELISA and flow cytometry. |
| Characteristics: | Source: Pooled antisera from goats hyperimmunized with mouse IgG paraproteins. To insure lot-to-lot consistency, each batch of product is tested by ELISA, PCFIA and/or flow cytometry to conform to characteristics of a standard reference reagent. |
| Purification: | Affinity chromatography on pooled mouse IgG covalently linked to agarose. |

Target Details

| | |
|-----------|------------------------------|
| Target: | IgG |
| Abstract: | IgG Products |

Target Details

Target Type: Antibody

Application Details

Application Notes: Working Dilution:
<= 1 µg/10⁶ cells
Representative data are included in this product insert.

Each laboratory should determine an optimum working titer for use in its particular application. Other applications have not been tested but use in such assays should not necessarily be excluded.

Comment: Texas Red™ is a registered trademark of Molecular Probes Inc.

Restrictions: For Research Use only

Handling

Handling Advice: **Protect conjugated products from light.**
Each reagent is stable for the period shown on the bottle label if stored as directed.

Storage: 4 °C

Images

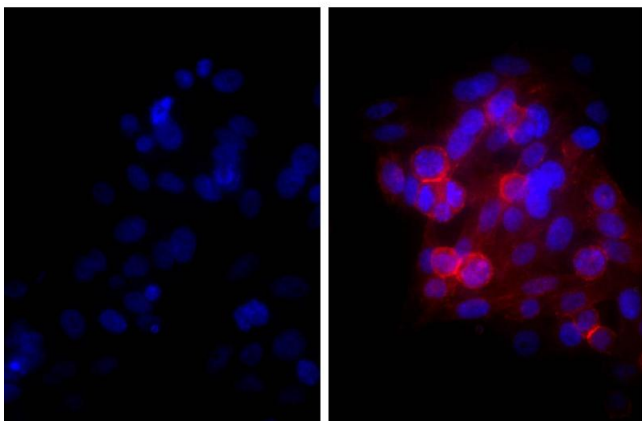


Image 1. Human epithelial carcinoma cell line HEP-2 was stained with Mouse Anti-Human CD44-UNLB and DAPI.