

Datasheet for ABIN376799

Goat anti-Rat Ig (Heavy & Light Chain) Antibody (Texas Red (TR))

[Go to Product page](#)

1 Image

Overview

Quantity:	1 mg
Target:	Ig
Binding Specificity:	Heavy & Light Chain
Reactivity:	Rat
Host:	Goat
Clonality:	Polyclonal
Conjugate:	Texas Red (TR)
Application:	ELISA, Flow Cytometry (FACS), Immunohistochemistry (IHC)

Product Details

Isotype:	IgG
Specificity:	Reacts with the heavy and light chains of rat IgM and IgG, and with the light chains of rat IgA as demonstrated by ELISA and/or flow cytometry.
Characteristics:	Source: Pooled antisera from goats hyperimmunized with normal rat IgM and IgG To insure lot-to-lot consistency, each batch of product is tested by ELISA, PCFIA and/or flow cytometry for conformance to characteristics of a standard reference reagent.
Purification:	Affinity chromatography on pooled rat IgM + IgG covalently linked to agarose

Target Details

Target:	Ig
Abstract:	Ig Products

Application Details

Application Notes: Working Dilution:
<= 1 µg/10⁶ cells
Representative data are included in this product insert.

Each laboratory should determine an optimum working titer for use in its particular application. Other applications have not been tested but use in such assays should not necessarily be excluded.

Comment: Texas Red™ is a registered trademark of Molecular Probes Inc.

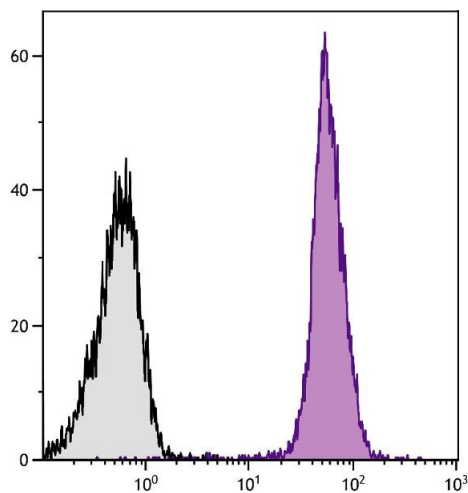
Restrictions: For Research Use only

Handling

Handling Advice: **Protect conjugated products from light.**
Each reagent is stable for the period shown on the bottle label if stored as directed.

Storage: 4 °C

Images



Flow Cytometry

Image 1. BALB/c mouse splenocytes were stained with Rat Anti-Mouse CD45-UNLB.