

Datasheet for ABIN376803

## Goat anti-Rabbit IgG (Heavy & Light Chain) Antibody (Texas Red (TR))

[Go to Product page](#)

### 1 Image

#### Overview

Quantity:	1 mg
Target:	IgG
Binding Specificity:	Heavy & Light Chain
Reactivity:	Rabbit
Host:	Goat
Clonality:	Polyclonal
Conjugate:	Texas Red (TR)
Application:	ELISA, Immunohistochemistry (IHC), Flow Cytometry (FACS)

#### Product Details

Isotype:	IgG
Specificity:	Reacts with the heavy and light chains of rabbit IgG, and with the light chains of rabbit IgM and IgA as demonstrated by ELISA and flow cytometry.
Characteristics:	Source: Pooled antisera from goats hyperimmunized with normal rabbit IgG. To insure lot-to-lot consistency, each batch of product is tested by ELISA, PCFIA and/or flow cytometry for conformance to characteristics of a standard reference reagent.
Purification:	Affinity chromatography on mouse IgM covalently linked to agarose.

#### Target Details

Target:	IgG
Abstract:	<a href="#">IgG Products</a>

## Target Details

---

Target Type: Antibody

## Application Details

---

Application Notes: Working Dilution:  
<= 1 µg/10<sup>6</sup> cells  
Representative data are included in this product insert.

Each laboratory should determine an optimum working titer for use in its particular application. Other applications have not been tested but use in such assays should not necessarily be excluded.

Comment: Texas Red™ is a registered trademark of Molecular Probes Inc.

Restrictions: For Research Use only

## Handling

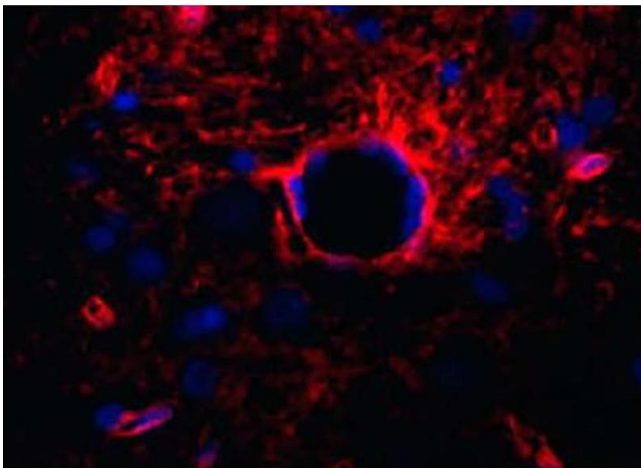
---

Handling Advice: **Protect conjugated products from light.**  
Each reagent is stable for the period shown on the bottle label if stored as directed.

Storage: 4 °C

## Images

---



### Immunohistochemistry

**Image 1.** Paraffin embedded rat brain section was stained with anti-AQP4 followed by Goat Anti-Rabbit IgG(H+L), Mouse/Human ads-TXRD