

Datasheet for ABIN376806

## Goat anti-Rat IgG (Heavy & Light Chain) Antibody (Texas Red (TR))

[Go to Product page](#)

### 1 Image

#### Overview

Quantity:	1 mg
Target:	IgG
Binding Specificity:	Heavy & Light Chain
Reactivity:	Rat
Host:	Goat
Clonality:	Polyclonal
Conjugate:	Texas Red (TR)
Application:	ELISA, Immunohistochemistry (IHC), Flow Cytometry (FACS)

#### Product Details

Isotype:	IgG
Specificity:	Reacts with the heavy and light chains of rat IgG, and with the light chains of rat IgM and IgA as demonstrated by ELISA and/or flow cytometry.
Characteristics:	Source: Pooled antisera from goats hyperimmunized with normal rat IgG. To insure lot-to-lot consistency, each batch of product is tested by ELISA, PCFIA and/or flow cytometry for conformance to characteristics of a standard reference reagent.
Purification:	Affinity chromatography on mouse IgM covalently linked to agarose.

#### Target Details

Target:	IgG
Abstract:	<a href="#">IgG Products</a>

## Target Details

---

Target Type: Antibody

## Application Details

---

Application Notes: Working Dilution:  
<= 1 µg/10<sup>6</sup> cells  
Representative data are included in this product insert.

Each laboratory should determine an optimum working titer for use in its particular application. Other applications have not been tested but use in such assays should not necessarily be excluded.

Comment: Texas Red™ is a registered trademark of Molecular Probes Inc.

Restrictions: For Research Use only

## Handling

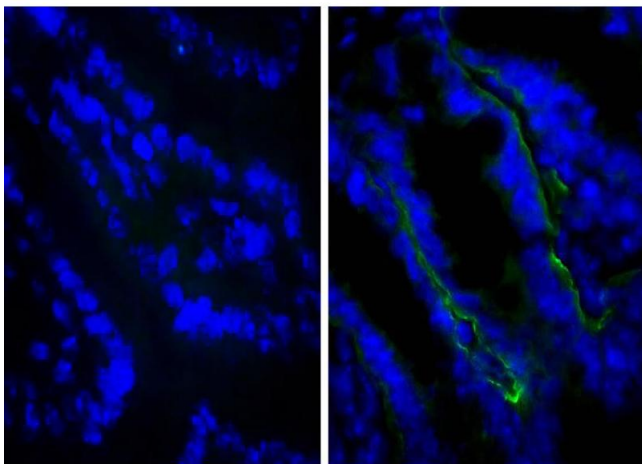
---

Handling Advice: **Protect conjugated products from light.**  
Each reagent is stable for the period shown on the bottle label if stored as directed.

Storage: 4 °C

## Images

---



### Immunofluorescence

**Image 1.** Frozen BALB/c mouse intestine tissue was stained with Rat IgG2a-UNLB isotype control, and DAPI.