

Datasheet for ABIN376815
anti-Interleukin 17a antibody



[Go to Product page](#)

1 Image

Overview

Quantity:	0.5 mg
Target:	Interleukin 17a (IL17A)
Reactivity:	Mouse
Host:	Rat
Clonality:	Monoclonal
Conjugate:	This Interleukin 17a antibody is un-conjugated
Application:	ELISA, Flow Cytometry (FACS), Detection (D)

Product Details

Immunogen:	E. coli-expressed mouse IL-17
Clone:	TC11-8H4
Isotype:	IgG1
Specificity:	Mouse IL-17A
Characteristics:	Rat Anti-Mouse IL-17A-UNLB
Purification:	Purified

Target Details

Target:	Interleukin 17a (IL17A)
Alternative Name:	IL-17A (IL17A Products)

Application Details

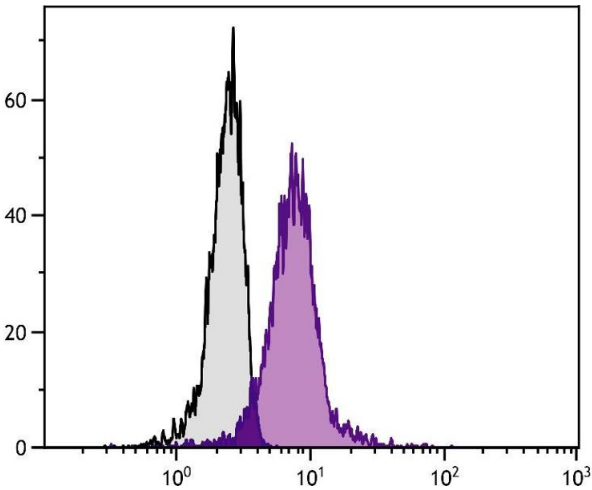
Application Notes:	<ul style="list-style-type: none">• Applications: ELISA-Detection - Quality tested , FC - Quality tested , ELISPOT-Capture - Reported in literature , ELISPOT-Detection - Reported in literature , Note - May be paired with the purified clone TC,-18H, (SB Cat. No. ,) in a sandwich ELISA• Working Dilutions: ELISA BIOT conjugate 1:1,000 - 1:2,000 Flow Cytometry FITC conjugate ≤ 1 g/106 cells For flow cytometry, the suggested use of these reagents is in a final volume of 100 L
--------------------	--

Sample Volume:	1 mL
Restrictions:	For Research Use only

Handling

Concentration:	0.5 mg/mL
Buffer:	0.5 mg purified immunoglobulin in 1.0 mL of borate buffered saline, pH 8.2. No preservatives or amine-containing buffer salts added
Preservative:	Without preservative
Handling Advice:	Each reagent is stable for the period shown on the bottle label if stored as directed.
Storage:	4 °C
Storage Comment:	Store at 2-8°C

Images



Flow Cytometry

Image 1. PMA and ionomycin stimulated C57BL/6N mouse T lymphocyte EL-4 cell line was intracellularly stained with Rat Anti-Mouse IL-17A-FITC.