



[Go to Product page](#)

Datasheet for ABIN376819  
**Mouse IgG2a Isotype Control**

1 Image

### Overview

Quantity:	1 mg
Target:	IgG2a
Host:	Mouse
Clonality:	Monoclonal
Application:	Flow Cytometry (FACS), Isotype Control (IsoC), ELISA, Immunohistochemistry (IHC)

### Product Details

Clone:	HOPC-1
Isotype:	IgG2a
Characteristics:	To insure lot-to-lot consistency, each batch of product is tested to conform with characteristics of a standard reference reagent using immunofluorescence staining and analysis on a Becton Dickinson FACScan TM flow cytometer.
Purification:	Purified

### Target Details

Target:	IgG2a
Abstract:	<a href="#">IgG2a Products</a>
Target Type:	Antibody

### Application Details

Application Notes:	Working Dilution:
--------------------	-------------------

## Application Details

---

$\leq 1 \mu\text{g}/10^6$  cells

Representative data are included in this product insert.

Each laboratory should determine an optimum working titer for use in its particular application.

Other applications have not been tested but use in such assays should not necessarily be excluded.

---

Sample Volume: 1 mL

---

Restrictions: For Research Use only

## Handling

---

Buffer: Product is supplied as 1.0 mg of purified immunoglobulin in 1.0 mL of 100 mM borate buffered saline, pH 8.2.

---

Preservative: Azide free

---

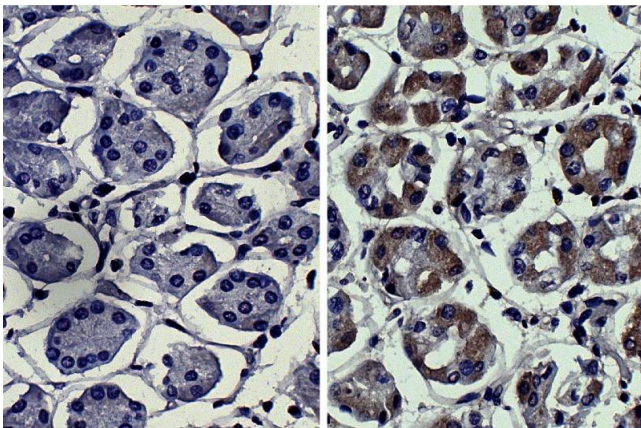
Handling Advice: Each reagent is stable for the period shown on the bottle label if stored as directed.

---

Storage: 4 °C

## Images

---



### Immunohistochemistry

**Image 1.** Paraffin embedded human kidney cancer tissue was stained with Mouse IgG2a-UNLB isotype control, DAB, and hematoxylin.