



[Go to Product page](#)

Datasheet for ABIN376827

Rabbit IgG Isotype Control

1 Image

5 Publications

Overview

Quantity:	10 mg
Target:	IgG
Host:	Rabbit
Clonality:	Polyclonal
Application:	ELISA, Flow Cytometry (FACS)

Product Details

Isotype:	IgG
Characteristics:	Rabbit IgG-UNLB
Purification:	Purified

Target Details

Target:	IgG
Abstract:	IgG Products
Target Type:	Antibody

Application Details

Application Notes:	<ul style="list-style-type: none">• Applications: Quality tested applications include - FC , ELISA , FLISA• Other referenced applications include - IHC-FS , IHC-PS , IHC-WM , ICC , WB , IP , ChIP , Microarray , Block , In vitro control , In vivo control• Working Dilutions: Flow Cytometry Purified (UNLB) antibody 1 g/106 cells BIOT conjugate 1
--------------------	--

Application Details

g/106 cells FITC and PE conjugates 10 L/106 cells For flow cytometry, the suggested use of these reagents is in a final volume of 100 L

Sample Volume: 2 mL

Restrictions: For Research Use only

Handling

Buffer: 10 mg of purified immunoglobulin in 2.0 mL of borate buffered saline, pH 8.2. No preservatives or amine-containing buffer salts added

Preservative: Without preservative

Handling Advice: Each reagent is stable for the period shown on the bottle label if stored as directed.

Storage: 4 °C

Storage Comment: Store at 2-8°C

Publications

Product cited in: Skowron-Kandzia, Tomsia, Koryciak-Komarska, Plewka, Wieczorek, Czekaj: "Gene Expression in Amnion-Derived Cells Cultured on Recombinant Laminin 332-A Preliminary Study." in: **Frontiers in medicine**, Vol. 8, pp. 719899, (2021) ([PubMed](#)).

Pampanini, Wagner, Asadi-Azarbaijani, Oskam, Sheikhi, Sjödin, Lindberg, Hovatta, Sahlin, Björvang, Otala, Damdimopoulou, Jahnukainen: "Impact of first-line cancer treatment on the follicle quality in cryopreserved ovarian samples from girls and young women." in: **Human reproduction (Oxford, England)**, Vol. 34, Issue 9, pp. 1674-1685, (2020) ([PubMed](#)).

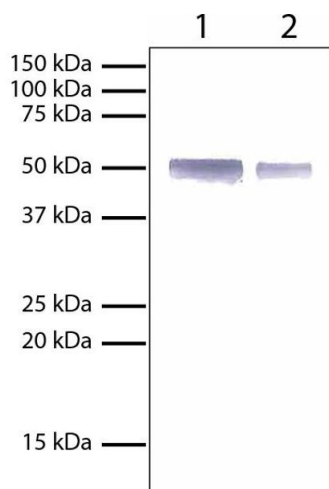
Leienecker, Jung, Krecioch, Neumann, Schleiffer, Mechtler, Wiesner, Obenauf: "LSD1 inhibition induces differentiation and cell death in Merkel cell carcinoma." in: **EMBO molecular medicine**, pp. e12525, (2020) ([PubMed](#)).

Shan, Xu, Bleyer, Becker, Melbaum, Wemheuer, Hirschfeld, Wacker, Zhao, Schütz, Brenig: "Association of α/β -Hydrolase D16B with Bovine Conception Rate and Sperm Plasma Membrane Lipid Composition." in: **International journal of molecular sciences**, Vol. 21, Issue 2, (2020) ([PubMed](#)).

Aeckerle, Drummer, Debowski, Viebahn, Behr: "Primordial germ cell development in the

marmoset monkey as revealed by pluripotency factor expression: suggestion of a novel model of embryonic germ cell translocation." in: **Molecular human reproduction**, Vol. 21, Issue 1, pp. 66-80, (2015) ([PubMed](#)).

Validation report #104459 for Immunohistochemistry (IHC)



Western Blotting

Image 1. Lane 1 - 1 mg Rabbit IgG

Lane 2 - 0.5 mg Rabbit IgG

Rabbit IgG.