

Datasheet for ABIN376846  
**Human IgG1 Isotype Control**



[Go to Product page](#)

1 Image

## Overview

Quantity:	0.5 mg
Target:	IgG1
Host:	Human
Clonality:	Polyclonal
Application:	Isotype Control (IsoC)

## Product Details

Isotype:	IgG1
Characteristics:	Human IgG1 Lambda-UNLB
Purification:	Purified

## Target Details

Target:	IgG1
Abstract:	<a href="#">IgG1 Products</a>
Target Type:	Antibody

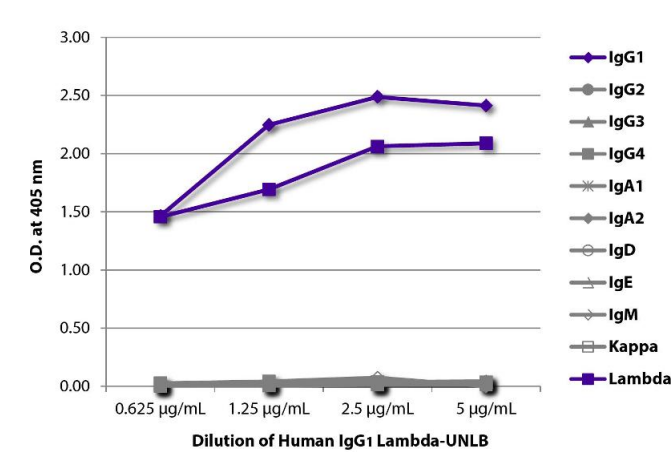
## Application Details

Application Notes:	Optimal working dilution should be determined by the investigator.
Sample Volume:	1 mL
Restrictions:	For Research Use only

Handling

Buffer:	The purified IgG is provided at a concentration of 0.5 mg/mL in 1.0 mL of 100 mM borate buffered saline, pH 8.2.
Handling Advice:	Each reagent is stable for the period shown on the bottle label if stored as directed.
Storage:	4 °C

Images



**ELISA**

**Image 1.** ELISA plate was coated with serially diluted Human IgG1 Lambda-UNLB and quantified.