



[Go to Product page](#)

Datasheet for ABIN376852

## Goat anti-Mouse Ig Antibody - Preadsorbed

### 1 Image

#### Overview

Quantity:	0.5 mg
Target:	Ig
Reactivity:	Mouse
Host:	Goat
Clonality:	Polyclonal
Application:	ELISA, Flow Cytometry (FACS)

#### Product Details

Isotype:	IgG
Fragment:	F(ab') <sub>2</sub> fragment
Specificity:	Reacts with the heavy and light chains of mouse IgG1, IgG2a, IgG2b, IgG2c, IgG3, IgM, and IgA
Characteristics:	Goat F(ab') <sub>2</sub> Anti-Mouse Ig, Human ads-UNLB
Purification:	Preadsorption: Human adsorbed

#### Target Details

Target:	Ig
Abstract:	<a href="#">Ig Products</a>

#### Application Details

Application Notes: 

- **Applications:** Quality tested applications include - ELISA , FLISA FC ,

## Application Details

- Other referenced applications include - ELISPOT , ICC , WB , Stim
- **Working Dilutions:** ELISA AP conjugate 1:2,000 - 1:4,000 HRP conjugate 1:4,000 - 1:8,000 BIOT conjugate 1:5,000 - 1:20,000 FLISA FITC, AF488, and AF555 conjugates 1:100 - 1:400 PE, APC, CY5, and AF647 conjugates 1 g/mL Flow Cytometry FITC, BIOT, and AF488 conjugates 1 g/106 cells PE, APC, SPRD, CY5, PE/CY5.5, and AF647 conjugates 0.1 g/106 cells PE/TXRD 0.03 g/106 cells For flow cytometry, the suggested use of these reagents is in a final volume of 100 L

Restrictions: For Research Use only

## Handling

Concentration: 0.5 mg/mL

Buffer: 0.5 mg purified immunoglobulin in 1.0 mL of borate buffered saline, pH 8.2. No preservatives or amine-containing buffer salts added

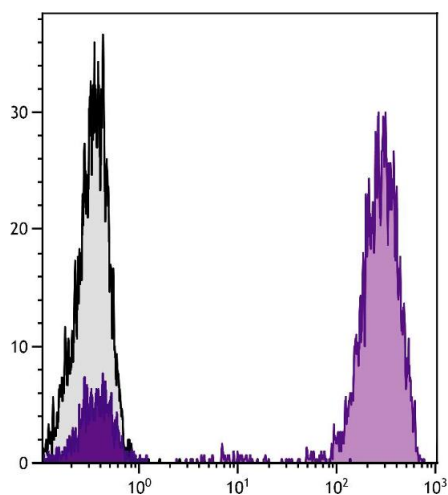
Preservative: Without preservative

Handling Advice: Each reagent is stable for the period shown on the bottle label if stored as directed.

Storage: 4 °C

Storage Comment: Store at 2-8°C

## Images



### Flow Cytometry

**Image 1.** Human peripheral blood lymphocytes were stained with Mouse Anti-Human CD3-UNLB followed by Goat F(ab')<sub>2</sub> Anti-Mouse Ig, Human ads-PE.