

Datasheet for ABIN376879

Rat anti-Mouse Immunoglobulin kappa Chain Complex (Igk) Antibody



[Go to Product page](#)

1 Image

2 Publications

Overview

Quantity:	0.5 mg
Target:	Igk
Reactivity:	Mouse
Host:	Rat
Clonality:	Monoclonal
Application:	Flow Cytometry (FACS), ELISA

Product Details

Immunogen:	MPC-11 immunoglobulin
Clone:	187-1
Isotype:	IgG1
Specificity:	Reacts with mouse kappa light chains.
Characteristics:	Rat Anti-Mouse Kappa-UNLB
Purification:	Purified

Target Details

Target:	Igk
Alternative Name:	Kappa (Igk Products)

Application Details

- Application Notes:
- **Applications:** FC - Quality tested , ELISA - Quality tested , FLISA - Quality tested IHC-FS - Reported in literature , WB-NR - Reported in literature , IP - Reported in literature , Purification - Reported in literature , Costim - Reported in literature
 - **Working Dilutions:** Flow Cytometry FITC and BIOT conjugates 1 g/10⁶ cells PE conjugate 0.2 g/10⁶ cells For flow cytometry, the suggested use of these reagents is in a final volume of 100 L ELISA AP conjugate 1:1,000 - 1:2,000 HRP conjugate 1:4,000 - 1:8,000 BIOT conjugate 1:5,000 - 1:10,000 FLISA FITC conjugate 1:200 - 1:400 PE conjugate 1 g/mL

Sample Volume: 1 mL

Restrictions: For Research Use only

Handling

Concentration: 0.5 mg/mL

Buffer: 0.5 mg of purified immunoglobulin in 1.0 mL of borate buffered saline, pH 8.2. No preservatives or amine-containing buffer salts added

Preservative: Without preservative

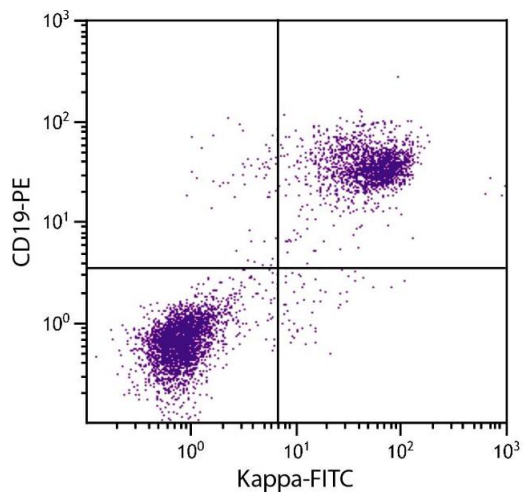
Handling Advice: Each reagent is stable for the period shown on the bottle label if stored as directed.

Storage: 4 °C

Storage Comment: Store at 2-8°C

Publications

Product cited in: Prescher, Baumgärtel, Ivanchenko, Torrano, Bräuchle, Müller, Lamb: "Super-resolution imaging of ESCRT-proteins at HIV-1 assembly sites." in: **PLoS pathogens**, Vol. 11, Issue 2, pp. e1004677, (2016) ([PubMed](#)).



Flow Cytometry

Image 1. BALB/c mouse splenocytes were stained with Rat Anti-Mouse Kappa-FITC.