



[Go to Product page](#)

Datasheet for ABIN376893

Goat anti-Human Ig Antibody

1 Image

Overview

Quantity:	0.5 mg
Target:	Ig
Reactivity:	Human
Host:	Goat
Clonality:	Polyclonal
Application:	ELISA, Flow Cytometry (FACS)

Product Details

Isotype:	IgG
Fragment:	F(ab') ₂ fragment
Specificity:	Reacts with the heavy and light chains of human IgG, IgM, and IgA
Characteristics:	Goat F(ab') ₂ Anti-Human Ig-UNLB
Purification:	Purified

Target Details

Target:	Ig
Abstract:	Ig Products

Application Details

Application Notes: • **Applications:** Quality tested applications include - ELISA , FLISA FC ,

Application Details

- Other referenced applications include - ELISPOT , IHC-FS , Stim
- **Working Dilutions:** ELISA BIOT conjugate 1:5,000 - 1:20,000 FLISA FITC, AF488, and AF555 conjugates 1:100 - 1:400 PE conjugate 1 g/mL Flow Cytometry FITC, BIOT, and AF488 conjugates 1 g/10⁶ cells PE conjugate 0.1 g/10⁶ cells For flow cytometry, the suggested use of these reagents is in a final volume of 100 L

Restrictions: For Research Use only

Handling

Concentration: 0.5 mg/mL

Buffer: 0.5 mg purified immunoglobulin in 1.0 mL of borate buffered saline, pH 8.2. No preservatives or amine-containing buffer salts added

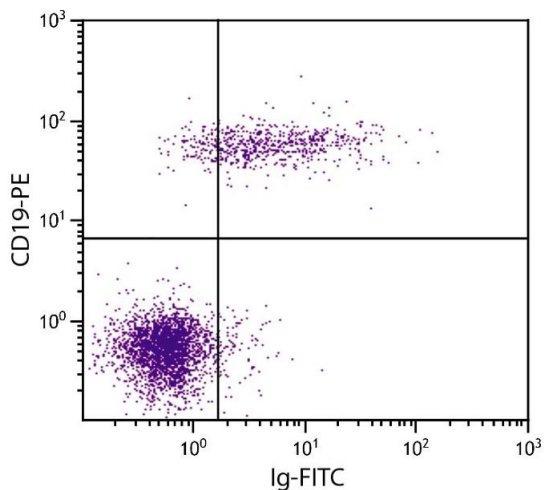
Preservative: Without preservative

Handling Advice: Each reagent is stable for the period shown on the bottle label if stored as directed.

Storage: 4 °C

Storage Comment: Store at 2-8°C

Images



Flow Cytometry

Image 1. Human peripheral blood lymphocytes were stained with Goat F(ab')₂ Anti-Human Ig-FITC.