

Datasheet for ABIN376936  
**Rat anti-Rabbit Ig Antibody**



[Go to Product page](#)

1 Image

## Overview

Quantity:	0.5 mg
Target:	Ig
Reactivity:	Rabbit
Host:	Rat
Clonality:	Monoclonal
Application:	ELISA, Flow Cytometry (FACS)

## Product Details

Immunogen:	Rabbit IgG and IgM
Clone:	SB87a
Isotype:	IgG2a
Specificity:	Rabbit IgG, IgM, and IgA Minimal reactivity to human, mouse, rat, hamster, goat, sheep, porcine, canine, and rhesus IgG and guinea pig serum
Characteristics:	Rat Anti-Rabbit Ig-UNLB
Purification:	Purified

## Target Details

Target:	Ig
Abstract:	<a href="#">Ig Products</a>

## Application Details

Application Notes:

- **Applications:** ELISA - Quality tested , FLISA - Quality tested FC - Quality tested
- **Working Dilutions:** ELISA HRP conjugate 1:4,000 - 1:8,000 BIOT conjugate 1:5,000 - 1:10,000  
FLISA PE conjugate 1 g/mL Flow Cytometry BIOT conjugate 1 g/10<sup>6</sup> cells PE and SPRD conjugates 0.1 g/10<sup>6</sup> cells For flow cytometry, the suggested use of these reagents is in a final volume of 100 l

Restrictions: For Research Use only

## Handling

Concentration: 0.5 mg/mL

Buffer: 0.5 mg of purified immunoglobulin in 1.0 mL of borate buffered saline, pH 8.2. No preservatives or amine-containing buffer salts added

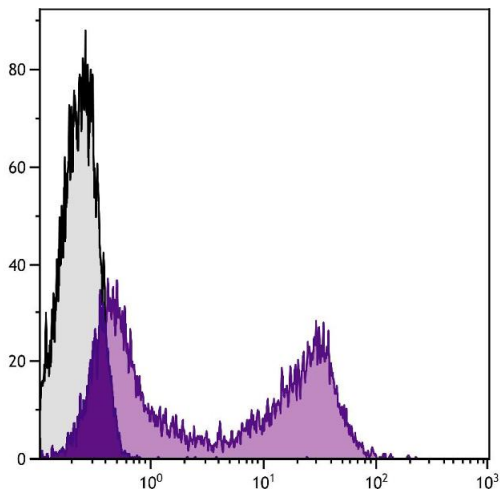
Preservative: Without preservative

Handling Advice: Each reagent is stable for the period shown on the bottle label if stored as directed.

Storage: 4 °C

Storage Comment: Store at 2-8°C

## Images



### Flow Cytometry

**Image 1.** Rabbit peripheral blood lymphocytes were stained with Rat Anti-Rabbit Ig-BIOT.