

Datasheet for ABIN376937

**Mouse anti-Rabbit IgG (Fc Region) Antibody**[Go to Product page](#)**1** Image

## Overview

Quantity:	0.5 mg
Target:	IgG
Binding Specificity:	Fc Region
Reactivity:	Rabbit
Host:	Mouse
Clonality:	Monoclonal
Application:	ELISA, Flow Cytometry (FACS)

## Product Details

Immunogen:	Recombinant rabbit IgG Fc fragment
Clone:	2A9
Isotype:	IgG1
Specificity:	Rabbit IgG Minimal reactivity to human, mouse, rat, goat, bovine, horse, donkey, sheep, guinea pig, and chicken serum
Characteristics:	Mouse Anti-Rabbit IgG-UNLB
Purification:	Purified

## Target Details

Target: IgG

Abstract: [IgG Products](#)

## Target Details

Target Type: Antibody

## Application Details

Application Notes:

- **Applications:** ELISA - Quality tested FLISA - Quality tested FC - Quality tested , IHC-PS - Reported in literature , WB - Reported in literature
- **Working Dilutions:** ELISA AP conjugate 1:1,000 - 1:2,000 HRP conjugate 1:4,000 - 1:8,000 BIOT conjugate 1:5,000 - 1:20,000 FLISA FITC and AF555 conjugates 1:200 - 1:400 PE conjugate 1 g/mL Flow Cytometry FITC conjugate 3 g/10<sup>6</sup> cells PE and SPRD conjugates 0.3 g/10<sup>6</sup> cells For flow cytometry, the suggested use of these reagents is in a final volume of 100 l

Restrictions: For Research Use only

## Handling

Concentration: 0.5 mg/mL

Buffer: 0.5 mg of purified immunoglobulin in 1.0 mL of borate buffered saline, pH 8.2. No preservatives or amine-containing buffer salts added

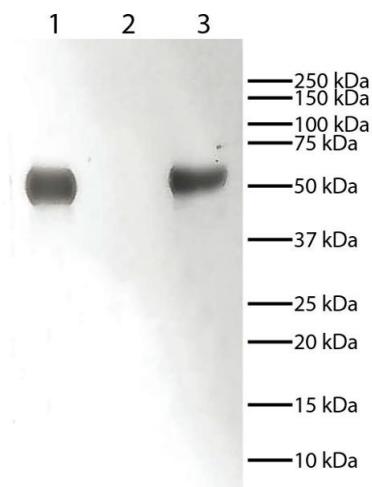
Preservative: Without preservative

Handling Advice: Each reagent is stable for the period shown on the bottle label if stored as directed.

Storage: 4 °C

Storage Comment: Store at 2-8°C

## Images



### Western Blotting

**Image 1.** Lane 1 - Rabbit IgG

Lane 2 - Rabbit IgG Light Chains

Lane 3 - Rabbit IgG Heavy Chains

Rabbit immunoglobulins above were resolved by electrophoresis under reducing conditions, transferred to PVDF membrane, and probed with Mouse Anti-Rabbit IgG-HRP. Proteins were visualized using chemiluminescent detection.