



[Go to Product page](#)

Datasheet for ABIN376954

## Goat anti-Chicken IgG (Heavy & Light Chain) Antibody

### 1 Image

#### Overview

Quantity:	1 mg
Target:	IgG
Binding Specificity:	Heavy & Light Chain
Reactivity:	Chicken
Host:	Goat
Clonality:	Polyclonal
Application:	ELISA, Immunohistochemistry (IHC), Western Blotting (WB), Flow Cytometry (FACS)

#### Product Details

Isotype:	IgG
Specificity:	Reacts with the heavy and light chains of chicken IgG as demonstrated by ELISA.
Characteristics:	Source: Pooled antisera from goats hyperimmunized with chicken IgG. To insure lot-to-lot consistency, each batch of product is tested by ELISA and PCFIA for conformance to characteristics of a standard reference reagent.
Purification:	Purified

#### Target Details

Target:	IgG
Abstract:	<a href="#">IgG Products</a>
Target Type:	Antibody

## Application Details

**Application Notes:** Each laboratory should determine an optimum working titer for use in its particular application. Other applications have not been tested but use in such assays should not necessarily be excluded.

**Restrictions:** For Research Use only

## Handling

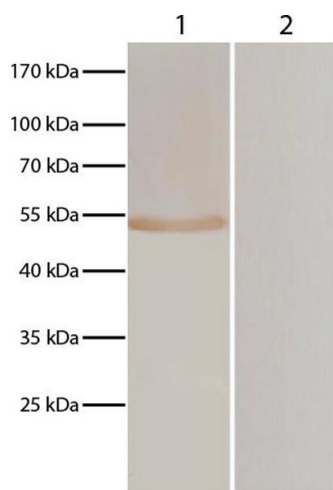
**Buffer:** 1.0 mg purified immunoglobulin in 1.0 mL of 100 mM borate buffered saline, pH 8.2.

**Preservative:** Azide free

**Handling Advice:** Each reagent is stable for the period shown on the bottle label if stored as directed.

**Storage:** 4 °C

## Images



### Western Blotting

**Image 1.** Lane 1 - pVAX-EF-1 $\alpha$  transfected BHK cells

Lane 2 - pVAXI transfected BHK cells

pVAX-EF-1 $\alpha$  and pVAXI transfected BHK cells were resolved by electrophoresis, transferred to membrane, and probed with anti-T. gondii followed by Goat Anti-Chicken IgY(H+L)-HRP and DAB.

Image from Wang S, Wang Y, Sun X, Zhang Z, Liu T, Gadahi JA, et al. Protective immunity against acute toxoplasmosis in BALB/c mice induced by a DNA vaccine encoding Toxoplasma gondii elongation factor 1-alpha. BMC Infect Dis. 2015;15:448. Figure 3