

Datasheet for ABIN376974

anti-FITC antibody[Go to Product page](#)**1** Image**2** Publications

Overview

Quantity:	1 mg
Target:	FITC
Reactivity:	Please inquire
Host:	Sheep
Clonality:	Polyclonal
Conjugate:	This FITC antibody is un-conjugated
Application:	ELISA, Western Blotting (WB), Immunohistochemistry (IHC), Flow Cytometry (FACS)

Product Details

Isotype:	IgG
Cross-Reactivity (Details):	Cross Absorption: Mouse, human and rat serum proteins.
Characteristics:	Source: Pooled antisera from sheep hyperimmunized with Fluorescein Isothiocyanate (Isomer I) To insure lot-to-lot consistency, each batch of product is tested by ELISA and/or PCFIA for conformance to characteristics of a standard reference reagent.
Purification:	Purified

Target Details

Target:	FITC
Alternative Name:	FITC (FITC Products)
Target Type:	Chemical

Application Details

Application Notes:	Each laboratory should determine an optimum working titer for use in its particular application. Other applications have not been tested but use in such assays should not necessarily be excluded.
Sample Volume:	1 mL
Restrictions:	For Research Use only

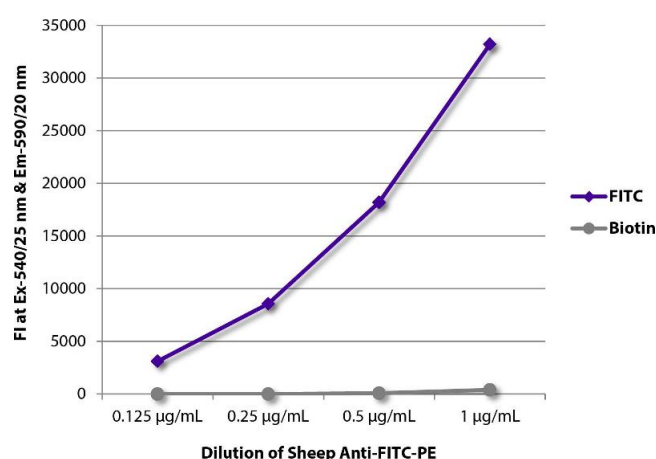
Handling

Buffer:	Product is supplied as 1.0 mg purified immunoglobulin in 1.0 mL of 100 mM borate buffered saline, pH 8.2.
Preservative:	Azide free
Handling Advice:	Each reagent is stable for the period shown on the bottle label if stored as directed.
Storage:	4 °C

Publications

Product cited in:	Jee, Ang, Cha, Ang, Ling, Lim, Lee: "Combinatorial bead-based peptide libraries improved for rapid and robust screenings." in: Combinatorial chemistry & high throughput screening , Vol. 17, Issue 6, pp. 520-30, (2014) (PubMed).
-------------------	--

Images



ELISA

Image 1. FLISA plate was coated with Goat Anti-Human IgG-FITC.