



[Go to Product page](#)

Datasheet for ABIN376976

Donkey anti-Mouse IgG (Heavy & Light Chain) Antibody

1 Image

Overview

Quantity:	1 mg
Target:	IgG
Binding Specificity:	Heavy & Light Chain
Reactivity:	Mouse
Host:	Donkey
Clonality:	Polyclonal
Application:	ELISA, Immunohistochemistry (IHC), Western Blotting (WB), Flow Cytometry (FACS)

Product Details

Isotype:	IgG
Specificity:	Reacts with the heavy and light chains of mouse IgG as demonstrated by ELISA.
Characteristics:	Source: Pooled antisera from donkeys hyperimmunized with mouse IgG. To insure lot-to-lot consistency, each batch of product is tested by ELISA and/or PCFIA for conformance to characteristics of a standard reference reagent.
Purification:	Purified

Target Details

Target:	IgG
Abstract:	IgG Products
Target Type:	Antibody

Application Details

Application Notes: Each laboratory should determine an optimum working titer for use in its particular application. Other applications have not been tested but use in such assays should not necessarily be excluded.

Restrictions: For Research Use only

Handling

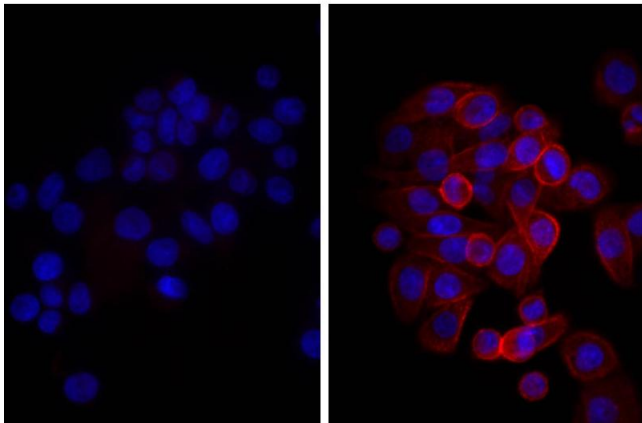
Buffer: 1.0 mg purified immunoglobulin in 1.0 mL of 100 mM borate buffered saline, pH 8.2.

Preservative: Azide free

Handling Advice: Each reagent is stable for the period shown on the bottle label if stored as directed.

Storage: 4 °C

Images



Immunofluorescence

Image 1. Human pancreatic carcinoma cell line MIA PaCa-2 was stained with Mouse Anti-Human CD44-UNLB, and DAPI.