

Datasheet for ABIN376979

Donkey anti-Rabbit IgG (Heavy & Light Chain) Antibody[Go to Product page](#)[1 Image](#)[1 Publication](#)

Overview

Quantity:	1 mg
Target:	IgG
Binding Specificity:	Heavy & Light Chain
Reactivity:	Rabbit
Host:	Donkey
Clonality:	Polyclonal
Application:	ELISA, Immunohistochemistry (IHC), Western Blotting (WB), Flow Cytometry (FACS)

Product Details

Isotype:	IgG
Specificity:	Reacts with the heavy and light chains of Rabbit IgG as demonstrated by ELISA.
Characteristics:	Source: Pooled antisera from donkey hyperimmunized with rabbit IgG. To insure lot-to-lot consistency, each batch of product is tested by ELISA and/or PCFIA for conformance to characteristics of a standard reference reagent.
Purification:	Purified

Target Details

Target:	IgG
Abstract:	IgG Products
Target Type:	Antibody

Application Details

Application Notes:	Each laboratory should determine an optimum working titer for use in its particular application. Other applications have not been tested but use in such assays should not necessarily be excluded.
Restrictions:	For Research Use only

Handling

Buffer:	1.0 mg purified immunoglobulin in 1.0 mL of 100 mM borate buffered saline, pH 8.2.
Preservative:	Azide free
Handling Advice:	Each reagent is stable for the period shown on the bottle label if stored as directed.
Storage:	4 °C

Publications

Product cited in:	Prescher, Baumgärtel, Ivanchenko, Torrano, Bräuchle, Müller, Lamb: "Super-resolution imaging of ESCRT-proteins at HIV-1 assembly sites." in: PLoS pathogens , Vol. 11, Issue 2, pp. e1004677, (2016) (PubMed).
-------------------	---

Images

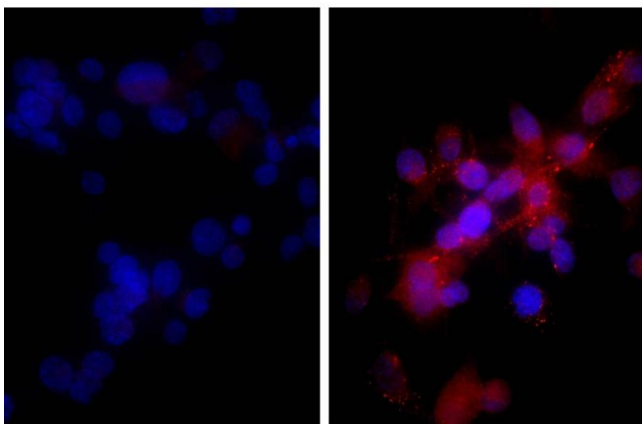


Image 1. Human hepatocellular carcinoma cell line Hep G2 was stained with Rabbit IgG-UNLB isotype control, and DAPI.