

Datasheet for ABIN376986

**Protein G Protein**[Go to Product page](#)**1** Image

## Overview

Quantity:	5 mg
Target:	Protein G
Origin:	Streptococcus
Source:	Escherichia coli (E. coli)
Protein Type:	Recombinant
Application:	ELISA, Immunoprecipitation (IP)

## Product Details

Characteristics:	<p>Source: Recombinant, from Streptococcus Strain G148, produced in E. coli.</p> <p>Mr/Structure 22 kDa. Protein G is a monomeric protein lacking cystine residues, on SDS gel, it migrates to 32 kDa.</p> <p>To insure lot-to-lot consistency, each batch of product is tested by FPLC and ELISA to conform to the characteristics of a standard reference reagent.</p>
Purification:	Purified

## Target Details

Target:	Protein G
Abstract:	<a href="#">Protein G Products</a>
Background:	Protein G binds the Fc portion of IgGs from many species including all human, and mouse (IgG 1, weakly) subclasses. It does not bind IgM, IgA, IgE or serum albumin.

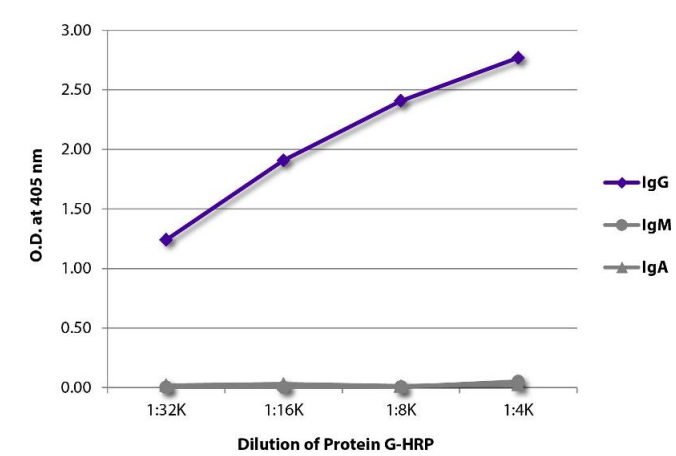
## Application Details

Application Notes:	Each laboratory should determine an optimum working titer for use in its particular application. Other applications have not been tested but use in such assays should not necessarily be excluded.
Comment:	Gamma immunoglobulin capture, Conjugation on solid phase or others to detect gamma immunoglobulin
Restrictions:	For Research Use only

## Handling

Buffer:	Product is supplied as either 1.0 mg or 5.0 mg in lyophilized form. No BSA, preservatives or amine-containing buffer salts have been added.
Preservative:	Azide free
Handling Advice:	Each reagent is stable for the period shown on the bottle label if stored as directed.
Storage:	-20 °C

## Images



### ELISA

**Image 1.** ELISA plate was coated with purified human IgG, IgM, and IgA. Immunoglobulins were detected with serially diluted Protein G-HRP.