

Datasheet for ABIN377001

**anti-CD13 antibody**[Go to Product page](#)**1** Image**1** Publication

## Overview

Quantity:	0.1 mg
Target:	CD13 (ANPEP)
Reactivity:	Human
Host:	Mouse
Clonality:	Monoclonal
Conjugate:	This CD13 antibody is un-conjugated
Application:	Flow Cytometry (FACS)

## Product Details

Immunogen:	Osteoclasts from osteoclastomas
Clone:	22A5
Isotype:	IgG2a
Specificity:	Human CD13, Mr 150 kDa
Characteristics:	Mouse Anti-Human CD13-UNLB
Purification:	Purified

## Target Details

Target:	CD13 (ANPEP)
Alternative Name:	CD13 ( <a href="#">ANPEP Products</a> )
Background:	CD13, also known as aminopeptidase N, is a 150 kDa type II integral membrane glycoprotein. It

## Target Details

is expressed on granulocytes, monocytes and their precursors, and on mast cells. CD13 is a zinc-binding metalloprotease that is involved in cell surface antigen presentation via its digestion of many MHC-bound regulatory peptides.

Pathways: [Peptide Hormone Metabolism](#), [Regulation of Systemic Arterial Blood Pressure by Hormones](#)

## Application Details

Application Notes:

- **Applications:** FC - Quality tested , IHC-FS - Reported in literature , IP
- **Working Dilutions:** Flow Cytometry Purified (UNLB) antibody 1 g/106 cells FITC and PE conjugates 10 L/106 cells For flow cytometry, the suggested use of these reagents is in a final volume of 100 L

Sample Volume: 1 mL

Restrictions: For Research Use only

## Handling

Concentration: 0.1 mg/mL

Buffer: 0.1 mg of purified immunoglobulin in 1.0 mL of borate buffered saline, pH 8.2. No preservatives or amine-containing buffer salts added

Preservative: Without preservative

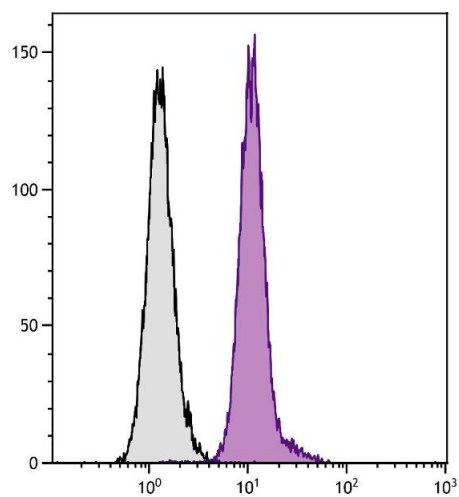
Handling Advice: Each reagent is stable for the period shown on the bottle label if stored as directed.

Storage: 4 °C

Storage Comment: Store at 2-8°C

## Publications

Product cited in: Fliedl, Manhart, Kast, Katinger, Kunert, Grillari, Wieser, Grillari-Voglauer: "Novel human renal proximal tubular cell line for the production of complex proteins." in: **Journal of biotechnology**, Vol. 176, pp. 29-39, (2014) ([PubMed](#)).



### Flow Cytometry

**Image 1.** Human peripheral blood monocytes and granulocytes were stained with Mouse Anti-Human CD13-UNLB.