

Datasheet for ABIN377004

anti-DPP4 antibody[Go to Product page](#)**1** Image

Overview

Quantity:	0.1 mg
Target:	DPP4
Reactivity:	Human
Host:	Mouse
Clonality:	Monoclonal
Conjugate:	This DPP4 antibody is un-conjugated
Application:	Flow Cytometry (FACS)

Product Details

Immunogen:	CD3 activated human peripheral blood mononuclear cells
Clone:	134-2C2
Isotype:	IgM
Specificity:	Human CD26, Mr 110 kDa
Characteristics:	Mouse Anti-Human CD26-UNLB
Purification:	Purified

Target Details

Target:	DPP4
Alternative Name:	CD26 (DPP4 Products)
Background:	CD26, also known as dipeptidyl peptidase (DPPIV), is a 110 kDa type II integral membrane

Target Details

glycoprotein that is primarily expressed by CD3+ medullary thymocytes and peripheral T cells. CD26 is serine protease that is also associated with T cell activation and proliferation, cell to cell adhesion and HIV infection.

Pathways: [Peptide Hormone Metabolism](#), [Regulation of Leukocyte Mediated Immunity](#)

Application Details

Application Notes:

- **Applications:** FC - Quality tested , IP - Reported in literature , Costim - Reported in literature
- **Working Dilutions:** Flow Cytometry Purified (UNLB) antibody 1 g/106 cells FITC and PE conjugates 10 L/106 cells For flow cytometry, the suggested use of these reagents is in a final volume of 100 L

Comment: Studies of CD26 mediated T cell Signaling, involvement in HIV infection

Sample Volume: 1 mL

Restrictions: For Research Use only

Handling

Concentration: 0.1 mg/mL

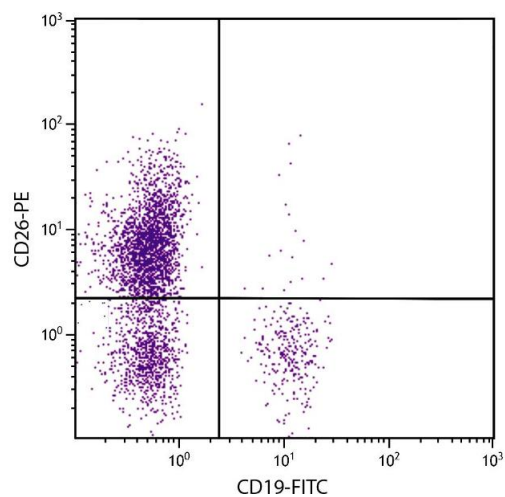
Buffer: 0.1 mg of purified immunoglobulin in 1.0 mL of borate buffered saline, pH 8.2. No preservatives or amine-containing buffer salts added

Preservative: Without preservative

Handling Advice: Each reagent is stable for the period shown on the bottle label if stored as directed.

Storage: 4 °C

Storage Comment: Store at 2-8°C



Flow Cytometry

Image 1. Human peripheral blood lymphocytes were stained with Mouse Anti-Human CD26-PE.